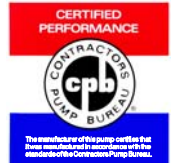




Self Priming Centrifugal Pump

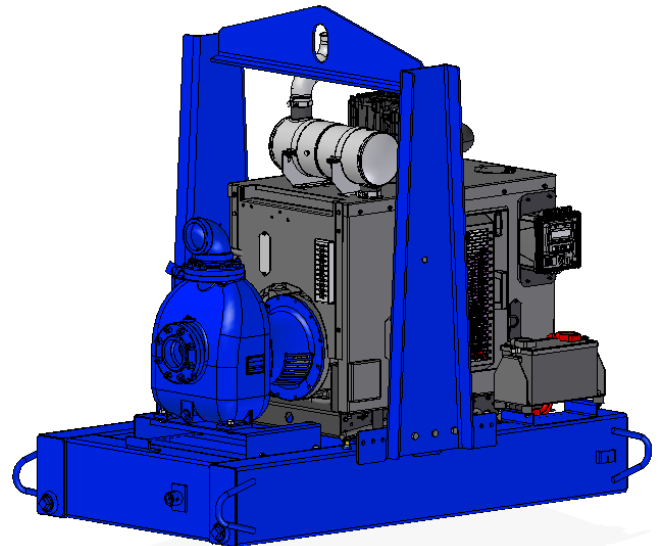
Model 84A2-QSF2.8P FT4

Size 4" x 4"



40M

Total Head		Capacity Of Pump in U.S. Gallons per Minute (GPM) At Continuous Performance				
P.S.I.	Feet					
90.2	208	200	200	200	200	200
86.7	200	260	325	325	325	325
78.0	180	297	418	520	555	555
69.4	160	308	432	550	648	693
60.7	140	315	445	560	663	735
52.0	120	325	453	568	673	748
43.3	100	333	462	575	682	757
34.7	80	340	470	583	690	763
26.0	60	345	478	590	695	770
17.3	40	350	485	595	697	775
Suction Lift		25'	20'	15'	10'	5'



PUMP SPECIFICATIONS

Size: 4" x 4" (101 mm x 101 mm) NPT - Female.

Casing: Gray Iron 30.

Maximum Operating Pressure 141 psi (972 kPa).*

Semi-Open Type, Three Vane Impeller: Gray Iron 30.

Handles 1 1/8" (28,6 mm) Diameter Spherical Solids.

Impeller Shaft: Carbon Steel 4150.

Replaceable Wear Plate: Carbon Steel ASTM A36.

Intermediate Bracket: Gray Iron 30.

Seal Plate: Gray Iron 30.

Seal: Double, Grease-Lubricated ^{w/}Spring-Loaded Grease Cup.

Sintered Bronze Stationary Seal Seats. Steel Rotating Faces.

Neoprene Packing Rings. Maximum Temperature of Liquid Pumped, 110°F (43°C).*

Maximum Suction Pressure 10 psi (69 kPa).*

Seal Liner: Copper Alloy C26000.

Flap Valve: Neoprene and Steel.

Radial/Thrust Bearing: Tapered Roller Type.

Bearing Lubrication: Grease.

Flanges: Gray Iron 30.

Gaskets: Synthetic Fiber.

Hardware: Standard Plated Steel.

Standard Equipment: Hoisting Bail. Combination Skid Base ^{w/}Fuel

Tank. 90° Discharge Elbow. Strainer.

**Consult Factory for Applications Exceeding Maximum Pressure and/or Temperature Indicated.*

**Consult Factory for Applications Exceeding Maximum Pressure and/or Temperature Indicated.*

Optional Equipment: Battery. High Speed (55 MPH/89 KM/H)

Single Axle Pneumatic-Tired Wheel Kit ^{w/wo} DOT-Approved Lights

and Electric Brakes. [Tandem Axle Over-the-Road Trailer](#).



ENGINE SPECIFICATIONS

Model: Cummins QSF2.8.

EPA Tier: Final Tier 4.

Type: Four Cylinder, Four Cycle, Turbocharged, Charge Air Cooled, Liquid Cooled Diesel Engine.

Displacement: 173 Cu. In. (2,8 Liters).

Lubrication: Forced Circulation.

Air Cleaner: Dry Type.

Fuel Tank: 61 U.S. Gals. (231 Liters).

Full Load Operating Time: 25.6 Hrs.

Starter: 12V Electric.

Standard Features: Muffler ^{w/}Weather Cap.

Optional: Electronic Fuel Level Sensor.

Engine Control Features: Padlockable Box with Throttle Control, Tachometer, Coolant Temperature, Oil Pressure, Voltage and Overstart Indicators/Shutdowns. Manual/Stop Key-switch. Fuel Level Display/Alarm/Shutdown (For Use With Optional Fuel Level Sensor).

CUMMINS PUBLISHED PERFORMANCE:

Maximum Gross Continuous BHP

74 (55 kW) @ 2500 RPM



GORMAN-RUPP PUMPS

www.grpumps.com

Specifications Subject to Change Without Notice

Printed in U.S.A.

Specification Data

SKID BASE

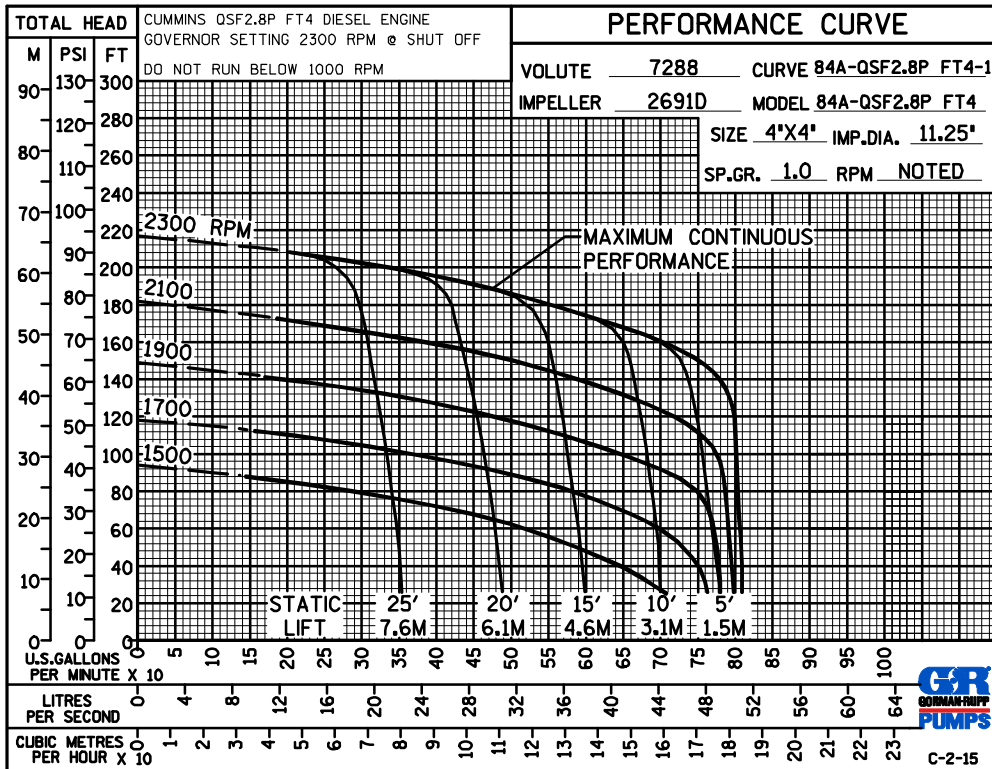
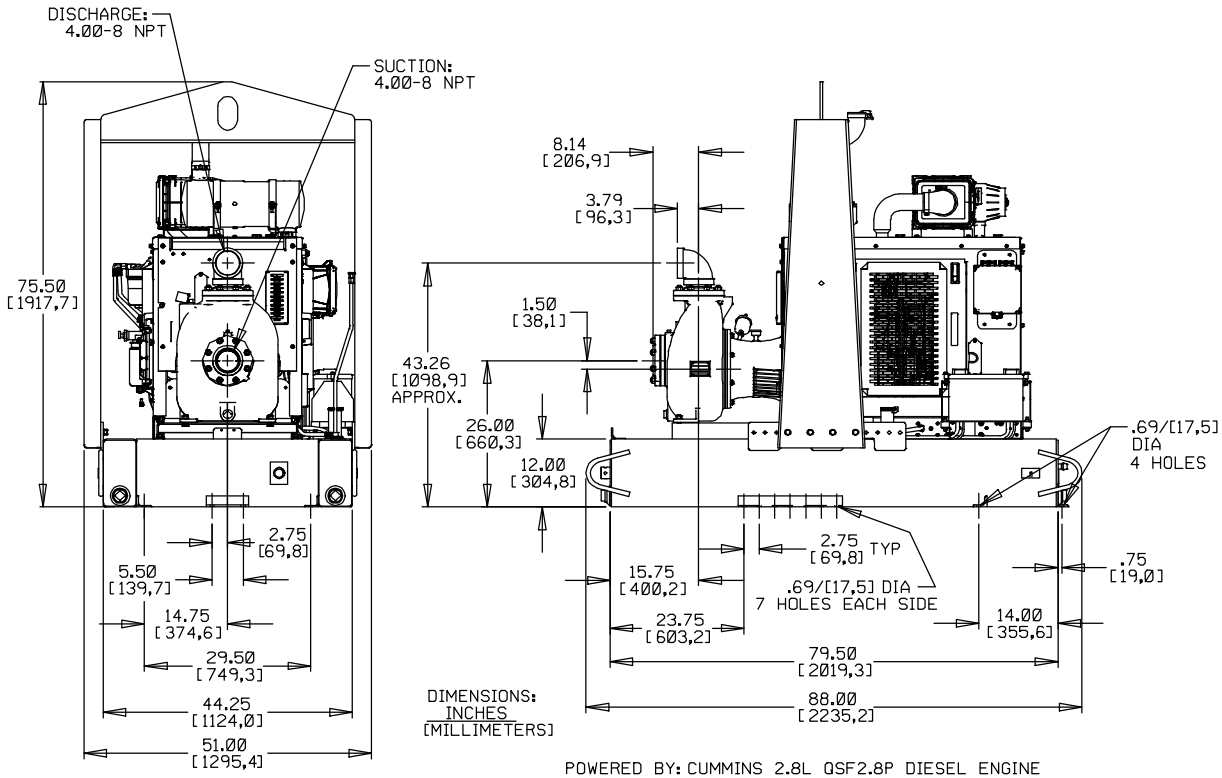
2-WHEEL

APPROXIMATE
DIMENSIONS and
WEIGHTS

NET WEIGHT: 2522 LBS. [1144 KG.]
SHIPPING WEIGHTS: 2822 LBS. [1280 KG.]
EXPORT CRATE: 253 CU. FT. [7.2 CU. M.]

3022 LBS. [1370 KG.]
3022 LBS. [1370 KG.]

SECTION 40, PAGE 1495



GORMAN-RUPP PUMPS

www.grpumps.com

Specifications Subject to Change Without Notice

Printed in U.S.A.