



Self Priming Centrifugal Pump

Model 86A2-QSF2.8P FT4

Size 6" x 6"



90M

Total Head		Capacity Of Pump in U.S. Gallons per Minute (GPM) At Continuous Performance				
P.S.I.	Feet					
70.2	162	355	355	355	355	355
60.7	140	755	980	1000	1000	1000
52.0	120	800	1110	1300	1320	1320
43.4	100	820	1140	1410	1535	1535
34.7	80	830	1160	1430	1640	1700
26.0	60	835	1180	1440	1660	1800
17.3	40	840	1185	1450	1665	N/A
8.7	20	840	1195	1460	1670	N/A
Suction Lift		25'	20'	15'	10'	5'



PUMP SPECIFICATIONS

Size: 6" x 6" (152 mm x 152 mm) NPT Female.

Casing: Gray Iron 30.

Maximum Operating Pressure 115 psi (793 kPa).*

Semi-Open Type, Three Vane Impeller: Gray Iron 30.

Handles 1 15/16" (49,3 mm) Diameter Spherical Solids.

Impeller Shaft: Carbon Steel 4150.

Replaceable Wear Plate: Gray Iron 30.

Intermediate Bracket: Gray Iron 30.

Seal Plate: Gray Iron 30.

Seal: Double, Grease-Lubricated w/Spring-Loaded Grease Cup. Sintered Bronze Stationary Seal Seats. Steel Rotating Faces. Neoprene Packing Rings. Maximum Temperature of Liquid Pumped 110°F (43°C).* Maximum Suction Pressure 10 psi (69 kPa).*

Seal Liner: Copper Alloy C26000.

Flap Valve: Alloy Steel and Buna-N w/Nylon Reinforcement.

Radial/Thrust Bearings: Tapered Roller Type.

Bearing Lubrication: Grease.

Flange: Gray Iron 30.

Gaskets: Vegetable Fiber.

Hardware: Standard Plated Steel.

Standard Equipment: Hoisting Bail. Combination Skid Base w/Fuel Tank. 90° Discharge Elbow. Strainer.

**Consult Factory for Applications Exceeding Maximum Pressure and/or Temperature Indicated.*

Optional Equipment: Battery. High Speed (55 MPH/89 KM/H) Single Axle Wheel Kit w/wo DOT-Approved Lights and Electric Brakes. [Tandem Axle Over-the-Road Trailer.](#)



WARNING!

Do not use in explosive atmosphere or for pumping volatile flammable liquids.

ENGINE SPECIFICATIONS

Model: Cummins QSF2.8.

EPA Tier: Final Tier 4.

Type: Four Cylinder, Four Cycle, Turbocharged, Charge Air Cooled, Liquid Cooled Diesel Engine.

Displacement: 173 Cu. In. (2,8 Liters).

Lubrication: Forced Circulation.

Air Cleaner: Dry Type.

Fuel Tank: 61 U.S. Gals. (231 Liters).

Full Load Operating Time: 23.5 Hrs.

Starter: 12V Electric.

Standard Features: Muffler w/Weather Cap.

Optional: Electronic Fuel Level Sensor.

Engine Control Features: Padlockable Box with Throttle Control, Tachometer, Coolant Temperature, Oil Pressure, Voltage and Over-start Indicators/Shutdowns. Manual/Stop Key-switch. Fuel Level Display/Alarm/Shutdown (For Use With Optional Fuel Level Sensor).

CUMMINS PUBLISHED PERFORMANCE:

Maximum Gross Continuous BHP
74 (55 kW) @ 2500 RPM



GORMAN-RUPP PUMPS

www.grpumps.com

Specifications Subject to Change Without Notice

Printed in U.S.A.

Specification Data

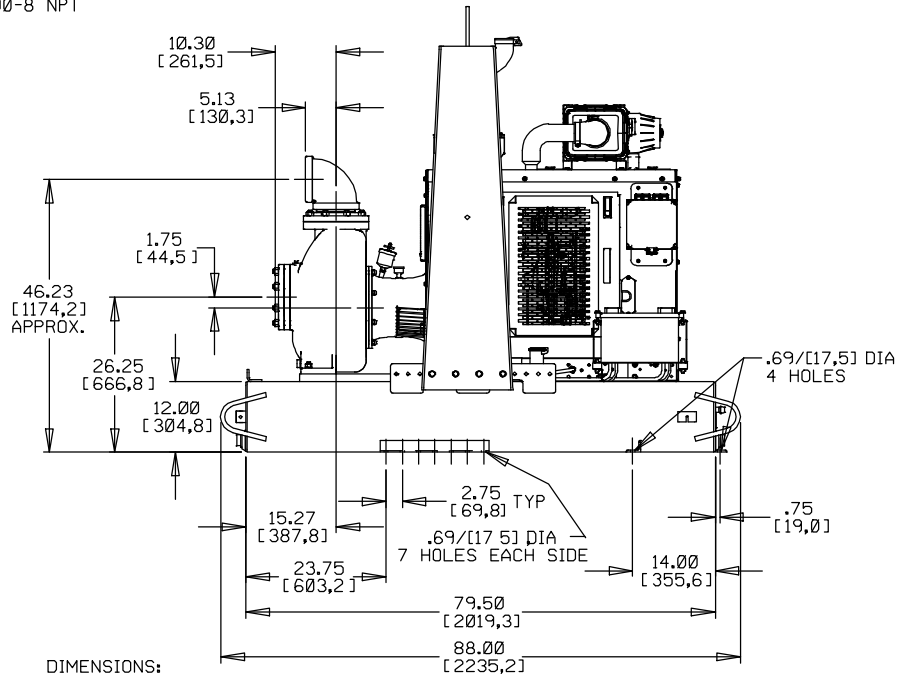
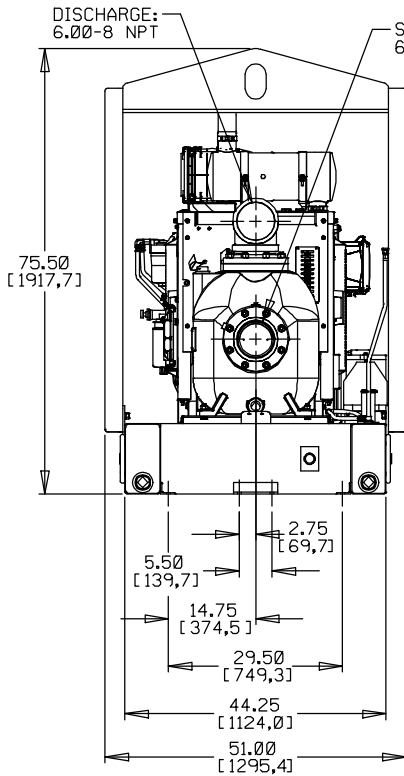
SKID BASE

2-WHEEL

APPROXIMATE
DIMENSIONS and
WEIGHTS

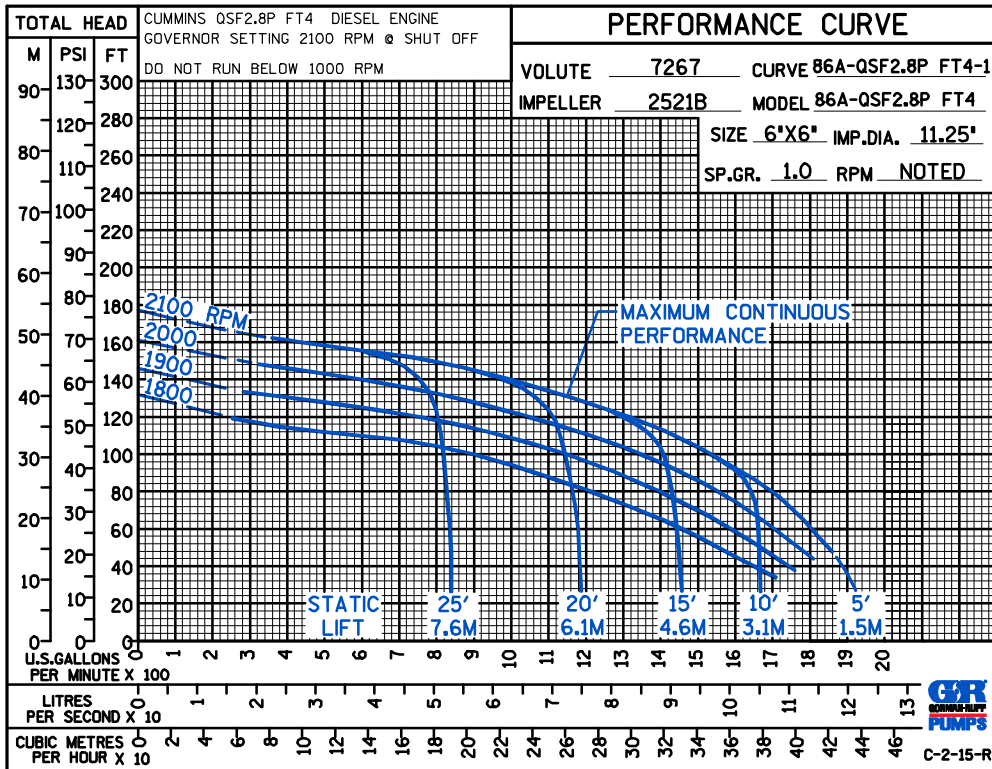
NET WEIGHT: 2780 LBS. [1261 KG.] **3380 LBS. [1533 KG.]**
SHIPPING WEIGHTS: 2930 LBS. [1329 KG.] **3380 LBS. [1533 KG.]**
EXPORT CRATE: 253 CU. FT. [7.2 CU. M.]

SECTION 40, PAGE 1868



DIMENSIONS:
INCHES
[MILLIMETERS]

POWERED BY: CUMMINS 2.8L QSF2.8P DIESEL ENGINE



GORMAN-RUPP PUMPS

www.grpumps.com

Specifications Subject to Change Without Notice

Printed in U.S.A.