



VARIOUS PATENTS APPLY

Priming Assisted Centrifugal Enclosed Silent Pump w/Autostart Model PA4E71C-3TNV88F FT4-ESP

Size 4" x 4"



Total Head		Capacity of Pump in Gallons per Minute (GPM) at Continuous Performance				
PSI	Feet	180	180	180	0	0
46.4	107	180	180	180	0	0
39.0	90	335	460	540	0	0
34.7	80	360	495	610	450	450
30.3	70	370	515	640	650	650
26.0	60	380	535	660	745	790
21.7	50	390	550	680	780	900
17.3	40	400	570	705	810	920
13.0	30	410	590	725	845	935
Suction Lift		25'	20'	15'	10'	5'

PUMP SPECIFICATIONS

Size: 4" x 4" (102 mm X 102 mm) Flanged.
Casing: Gray Iron 30.
 Maximum Operating Pressure 79 psi (545 kPa).*
Semi-Open Type, Two Vane Impeller: G-R Hard Iron.
 Handles 3" (76,2 mm) Diameter Spherical Solids.
Impeller Shaft: Stainless Steel 17-4 PH.
Externally Adjustable, Replaceable Wear Plate: G-R Hard Iron.
Bearing Housing: Gray Iron 30.
Seal Plate: G-R Hard Iron.
Seal: Cartridge Type, Mechanical, Oil-Lubricated, Double Floating, Self-Aligning. Silicon Carbide Rotating and Stationary Faces. Stainless Steel 316 Stationary Seat. Fluorocarbon Elastomers (DuPont Viton® or Equivalent). Stainless Steel 18-8 Cage and Spring. Maximum Temperature of Liquid Pumped 160°F (71 °C).*
Shaft Sleeve: Alloy Steel 4130.
Priming Chamber: Gray Iron 30 Housing w/Stainless Steel Float and Linkage.
Discharge Check Valve: Ductile Iron Housing with Welded Nickel Seat and Buna-N Flapper.
Radial Bearing: Open Single Row Ball.
Thrust Bearing: Open Double Row Ball.
Bearing and Seal Cavity Lubrication: SAE 30 Non-Detergent Oil.
Flanges: Gray Iron 30.
Gaskets: Buna-N, Rubber, Cork, and Vegetable Fiber.
O-Rings: Buna-N.
Hardware: Standard Plated Steel.
Bearing and Seal Cavity Oil Level Sight Gauges.
**Consult Factory for Applications Exceeding Maximum Pressure and/or Temperature Indicated.*
Standard Equipment: Soundproof (Average 69.8 dBA at 23 feet [7 meters] Under Load) Lightweight Aluminum Hinged Lockable Flip Top Enclosure - Removable for Maintenance of Pump or Engine. Combination Skid Base w/Fuel Tank. Wheel Kit. Synchronous Belt-Driven Air Compressor. . [Single Ball Type Float Switch](#). **
Optional Equipment: Battery. [Full Feature Control Panel](#) Two-Float Switch Kit
***15 m (50 Ft.) Standard Length; Dual Switches and Alternate Cable Lengths Available.*



WARNING!
 Do not use in explosive atmosphere or for pumping volatile flammable liquids.

ENGINE SPECIFICATIONS

Model: Yanmar 3TNV88F-ESGN.
EPA Tier: Tier 4.
Type: Three Cylinder, Four Cycle, Liquid Cooled Diesel Engine.
Displacement: 100 Cu. In. (1,64 Liters).
Lubrication: Forced Circulation.
Air Cleaner: Dry Type.
Fuel Tank: 48.8 U.S. Gals. (181,7 Liters).
Full Load Operating Time: 37.5 Hrs.
Starter: 12V Electric.
Standard Features: Exhaust Silencer Muffler.
Optional: Electronic Fuel Level Sensor.
Engine Control Features: Control Box with Throttle Control, Tachometer, Coolant Temperature, Oil Pressure, Voltage and Overstart Indicators/Shut-downs. Manual/Stop/Auto Keyswitch. Audible Startup Warning Delay. Fuel Level Display/Alarm/Shutdown (For Use With Optional Fuel Level Sensor).

YANMAR PUBLISHED PERFORMANCE:
 Maximum Intermittent Net
 24.7 HP (18,2 kW) @ 2200 RPM



GORMAN-RUPP PUMPS

www.grpumps.com

Specifications Subject to Change Without Notice

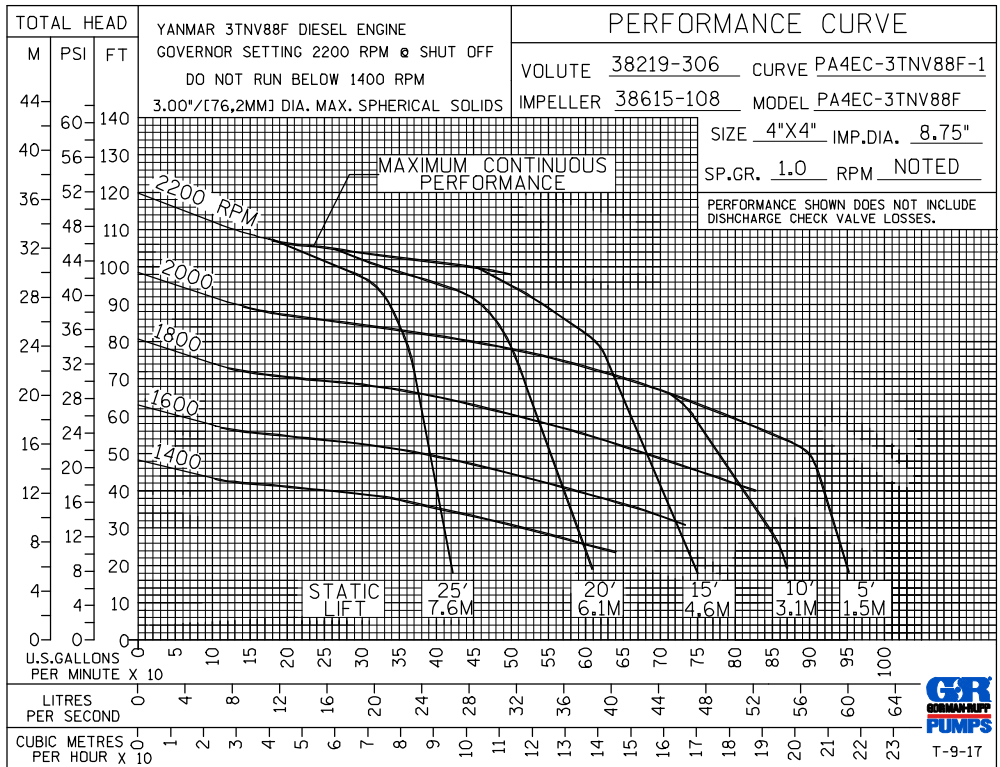
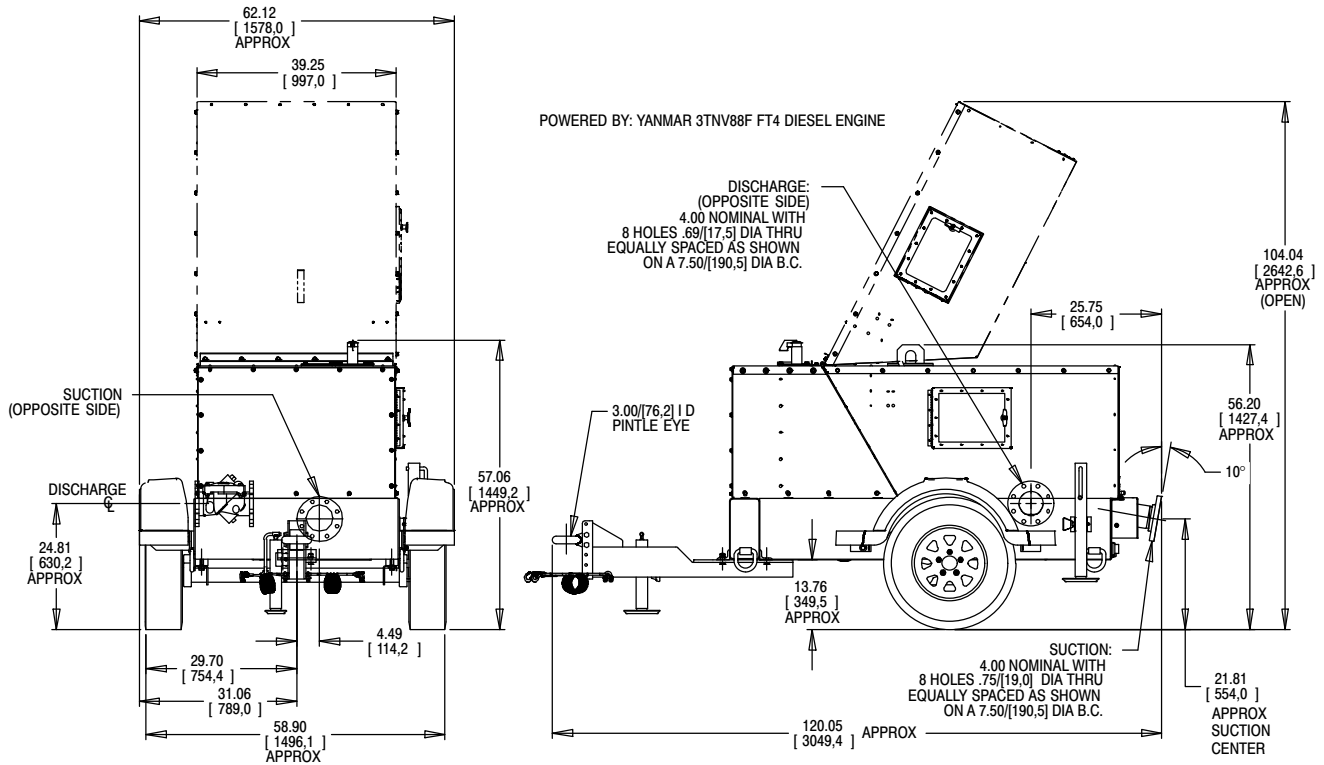
Printed in U.S.A.

Specification Data

SECTION 42, PAGE 197

APPROXIMATE DIMENSIONS and WEIGHTS

NET WEIGHT: 2300 LBS. (1043,3 KG.)
CRATED WEIGHT: 2600 LBS. (1179,3 KG.)
CRATE SIZE: 278 CU. FT. (7,9 CU. M.)



GORMAN-RUPP PUMPS

www.grpumps.com

Specifications Subject to Change Without Notice

Printed in U.S.A.