

Self Priming Centrifugal Pump



Models 12D-1B30E FT4 S/G and
12D1-1B30E FT4 S/G



Size 2" x 2"

Total Head		Capacity of Pump in U.S. Gallons per Minute (GPM) at Continuous Performance			
P.S.I.	Feet				
45.8	106	40	40	40	40
43.4	100	64	64	64	64
34.7	80	101	121	133	135
26.0	60	101	124	140	178
17.3	40	101	123	140	178
8.7	20	101	123	140	178
Suction Lift		20'	15'	10'	5'



PUMP SPECIFICATIONS

Size: 2" x 2" (51 mm x 51 mm) NPT - Female.

Casing: Aluminum Alloy 356-T6 w/Gray Iron 30 Cutwater Insert.
Maximum Operating Pressure 80 psi (552 kPa).*

Semi-Open Type, Two Vane Impeller: Ductile Iron 65-45-12.
Handles 1 3/16" (30.2 mm) Diameter Spherical Solids.

Replaceable Wear Plate: Carbon Steel ASTM A36.

Removable Cover Plate: Aluminum Alloy 356-T6; 4 lbs. (1,8 kg).

Intermediate Bracket: Gray Iron 30.

Seal:

(12D) Double, Grease-Lubricated w/Spring-Loaded Grease Cup. Sintered Bronze Stationary Seal Seats. Steel Rotating Faces. Neoprene Packing Rings. Maximum Temperature of Liquid Pumped, 110°F (43°C).

Maximum Suction Pressure 10 psi (69 kPa).*

(12D1) Type 31, Mechanical, Self-Lubricated. Silicon Carbide Rotating and Stationary Faces. Fluorocarbon Elastomers (DuPont Viton® or Equivalent). Stainless Steel 316 Cage and Spring.

Maximum Temperature of Liquid Pumped 160°F (71°C).*

Seal Liner: (12D) Copper Alloy C26000.

Shaft Sleeve: (12D1) 304 Stainless Steel.

Flap Valve: Buna-N with Nylon Reinforcement; Gray Iron 30 and Sintered Powdered Steel.

Suction Flange: Aluminum Alloy 356-T6.

Gaskets: Cork w/Nitrile Binder (NC710) and Vegetable Fiber.

Hardware: Standard Plated Steel.

Roll Cage with Rubber Feet.

90° Discharge Elbow.

Strainer.

Optional Equipment: Wheel Kit w/Semi-Pneumatic Tires.

**Consult Factory for Applications Exceeding Maximum Pressure and/or Temperature Indicated.*



ENGINE SPECIFICATIONS

Model: Hatz 1B30E-X.

EPA Tier: Final Tier 4.

Type: Four Cycle, Air Cooled, Diesel Engine.

Displacement: 21.2 Cu. In. (347 cc).

Lubrication: Forced Circulation.

Air Cleaner: Dry Type.

Fuel Tank: 1.32 U.S. Gal. (5,0 liters).

Full Load Operating Time: 2.8 Hours.

Starter: 12V Electric.

Governor: Electronic

Standard Equipment: Exhaust Silencer Muffler w/Guard. 90° Exhaust Deflector.

HATZ PUBLISHED PERFORMANCE:

Maximum Continuous Net B.H.P.

6.0 (4,5 kW) @ 3600 RPM



GORMAN-RUPP PUMPS

www.grpumps.com

Specifications Subject to Change Without Notice

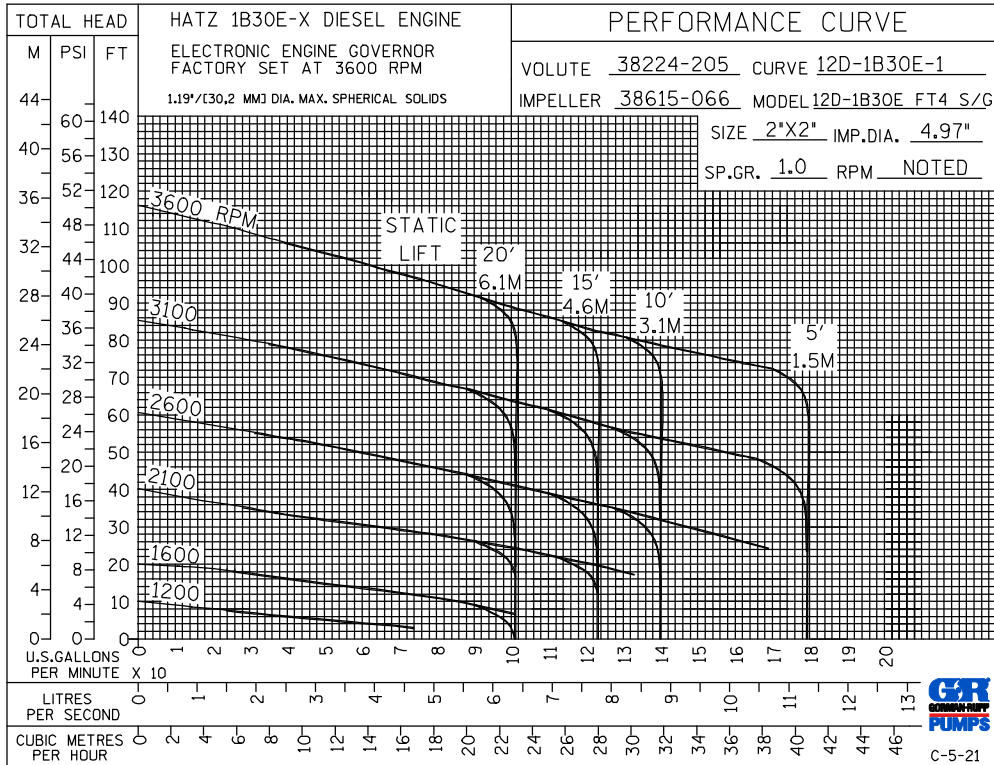
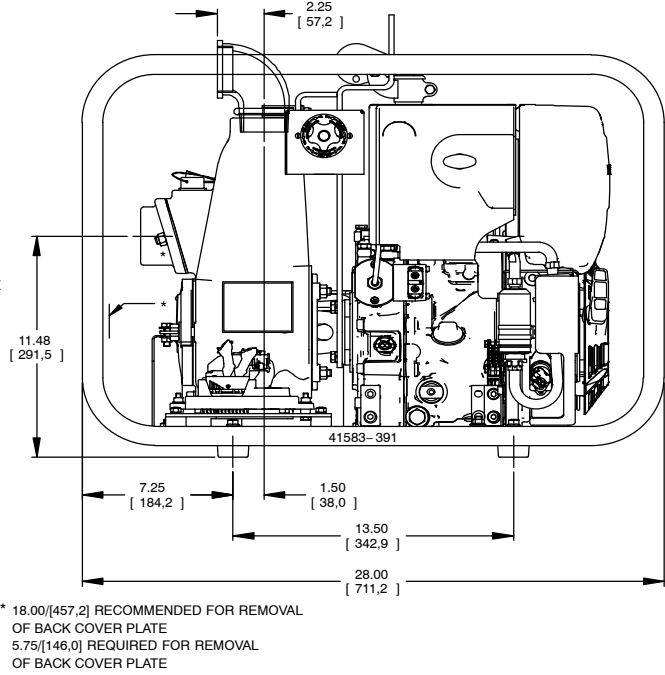
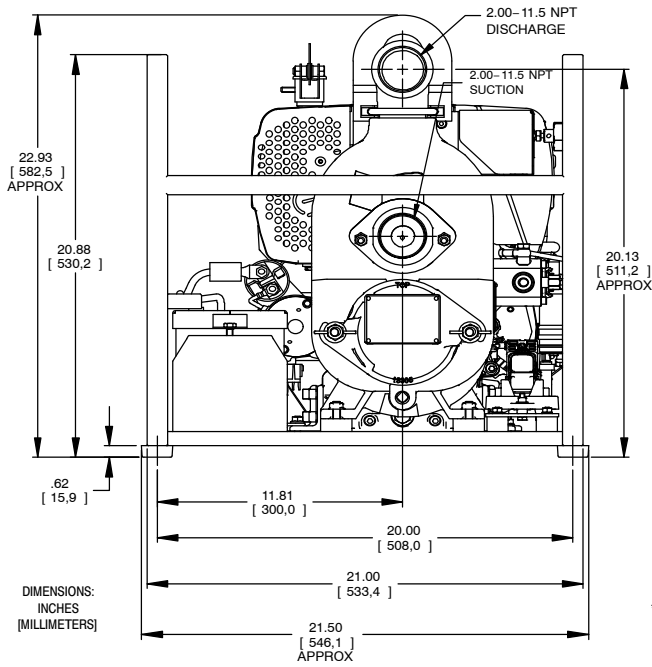
Printed in U.S.A.

Specification Data

APPROXIMATE
DIMENSIONS and WEIGHTS

NET WEIGHT: 150 LBS. (68 KG.)
SHIPPING WEIGHT: 161 LBS. (73 KG.)
EXPORT CRATE: 13.2 CU. FT. (0,37 CU. M.)
WHEEL KIT (ADD): 25 LBS. (11,3 KG.);
SHIPPING CRATE (SEPARATE) 3 CU. FT. (0,1 CU. M.).

SECTION 45, PAGE 538



GORMAN-RUPP PUMPS

www.grpumps.com

Specifications Subject to Change Without Notice

Printed in U.S.A.