



Self Priming Centrifugal Pump w/Autostart

Model T4A60S-QSF2.8P FT4

Size 4" x 4"



35 MT

Total Head		Capacity Of Pump In U.S. Gallons Per Minute (GPM) At Continuous Performance				
P.S.I.	Feet					
59.0	136	150	150	150	150	150
52.0	120	340	340	340	340	350
43.4	100	380	505	632	675	680
34.7	80	395	512	640	724	797
26.0	60	400	520	648	730	808
17.4	40	405	525	655	740	815
Suction Lift		25'	20'	15'	10'	5'

PHOTO NOT AVAILABLE AT TIME OF PUBLISHING

PUMP SPECIFICATIONS

- Size:** 4" x 4" (101 mm x 101 mm) NPT - Female.
- Casing:** Gray Iron 30.
Maximum Operating Pressure 98 psi (676 kPa).*
- Semi-Open Type, Two Vane Impeller:** Ductile Iron 65-45-12.
Handles 3" (76,2 mm) Diameter Spherical Solids.
- Impeller Shaft:** Stainless Steel 17-4 PH.
- Replaceable Wear Plate:** Carbon Steel ASTM A36.
- Removable Adjustable Cover Plate:** Gray Iron 30.
- Removable Inspection Cover Plate:** Gray Iron 30; 12 lbs. (5,4 kg.).
- Seal Plate:** Gray Iron 30.
- Seal:** Cartridge Type, Mechanical, Oil-Lubricated, Double Floating, Self-Aligning. Silicon Carbide Rotating and Stationary Faces. Stainless Steel 316 Stationary Seat. Fluorocarbon Elastomers (DuPont Viton® or Equivalent). Stainless Steel 18-8 Cage and Spring. Maximum Temperature of Liquid Pumped 160°F (71°C).*
- Flap Valve:** Neoprene w/Steel Reinforcement.
- Shaft Sleeve:** Alloy Steel 4130.
- Intermediate:** Gray Iron 30.
- Radial Bearing:** Open Single Row Ball.
- Thrust Bearing:** Open Double Row Ball.
- Bearing Lubrication:** SAE 30 Non-Detergent Oil.
- Flange:** Gray Iron 30.
- Gaskets:** Compressed Synthetic Fibers and PTFE.
- O-Rings:** Buna-N, PTFE, Fluorocarbon Elastomers (DuPont Viton® or Equivalent).
- Hardware:** Standard Plated Steel.
- Brass Pressure Relief Valve.**
- Bearing and Seal Cavity Oil Level Sight Gauges.**
- *Consult Factory for Applications Exceeding Maximum Pressure and/or Temperature Indicated.*
- Standard Equipment:** Hoisting Bail. 90° Discharge Elbow. Strainer. Combination Skid Base w/Fuel Tank. [Single Ball Type Float Switch**](#)
- Optional Equipment:** Battery. G-R Hard Iron Impeller and Seal Plate. Hardened Steel Wear Plate. High Speed (55 MPH/89 KM/H) Single Axle Pneumatic-Tired Wheel Kit w/wo DOT-Approved Lights and Electric Brakes. [Tandem Axle Over-the-Road Trailer](#). [Full Feature Control Panel](#) For Use w/Submersible Transducer Liquid Level Sensor.
- **50 Ft. (15 m) Standard Length; Dual Switches and Alternate Cable Lengths Available From the Factory.*



ENGINE SPECIFICATIONS

- Model:** Cummins QSF2.8.
- EPA Tier:** Final Tier 4.
- Type:** Four Cylinder, Four Cycle, Turbocharged, Charge Air Cooled, Liquid Cooled Diesel Engine.
- Displacement:** 173 Cu. In. (2,8 Liters).
- Lubrication:** Forced Circulation.
- Air Cleaner:** Dry Type.
- Fuel Tank:** 61 U.S. Gals. (231 Liters).
- Full Load Operating Time:** 31.9 Hrs.
- Starter:** 12V Electric.
- Standard Features:** Muffler w/Weather Cap.
- Optional:** Electronic Fuel Level Sensor.
- Engine Control Features:** Padlockable Box with Throttle Control, Tachometer, Coolant Temperature, Oil Pressure, Voltage and Overstart Indicators/Shutdowns. Manual/Stop/Auto Keyswitch. Audible Startup Warning Delay. Fuel Level Display/Alarm/Shutdown (For Use With Optional Fuel Level Sensor).

CUMMINS PUBLISHED PERFORMANCE:

Maximum Gross Continuous BHP
74 (55 kW) @ 2500 RPM



GORMAN-RUPP PUMPS

www.grpumps.com

Specifications Subject to Change Without Notice

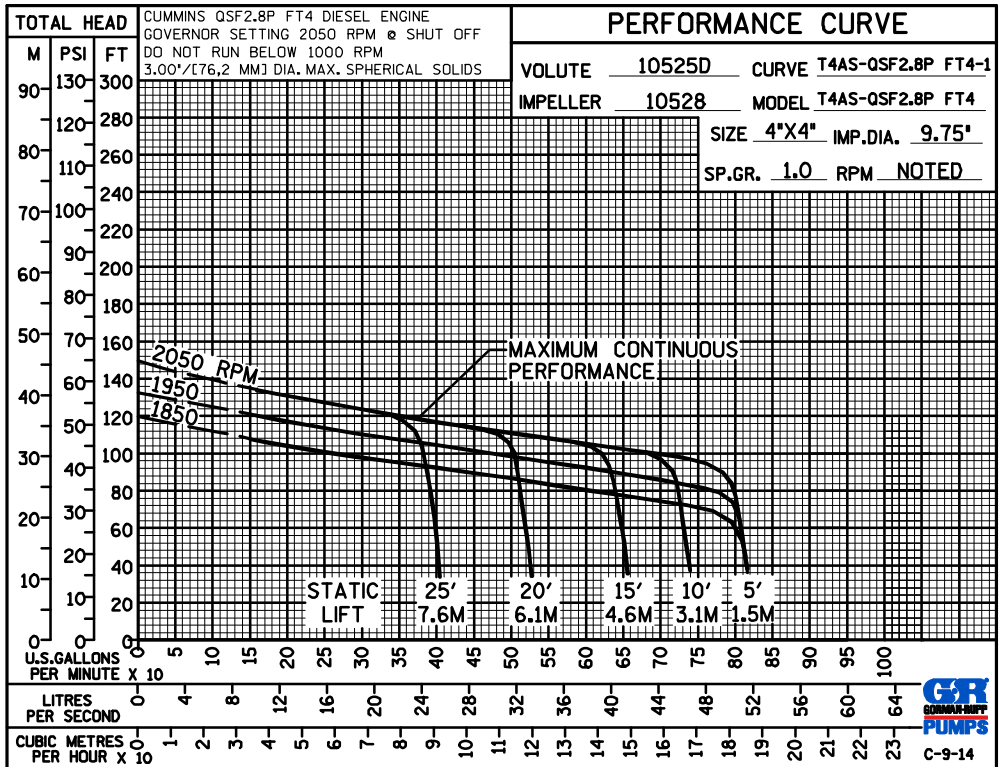
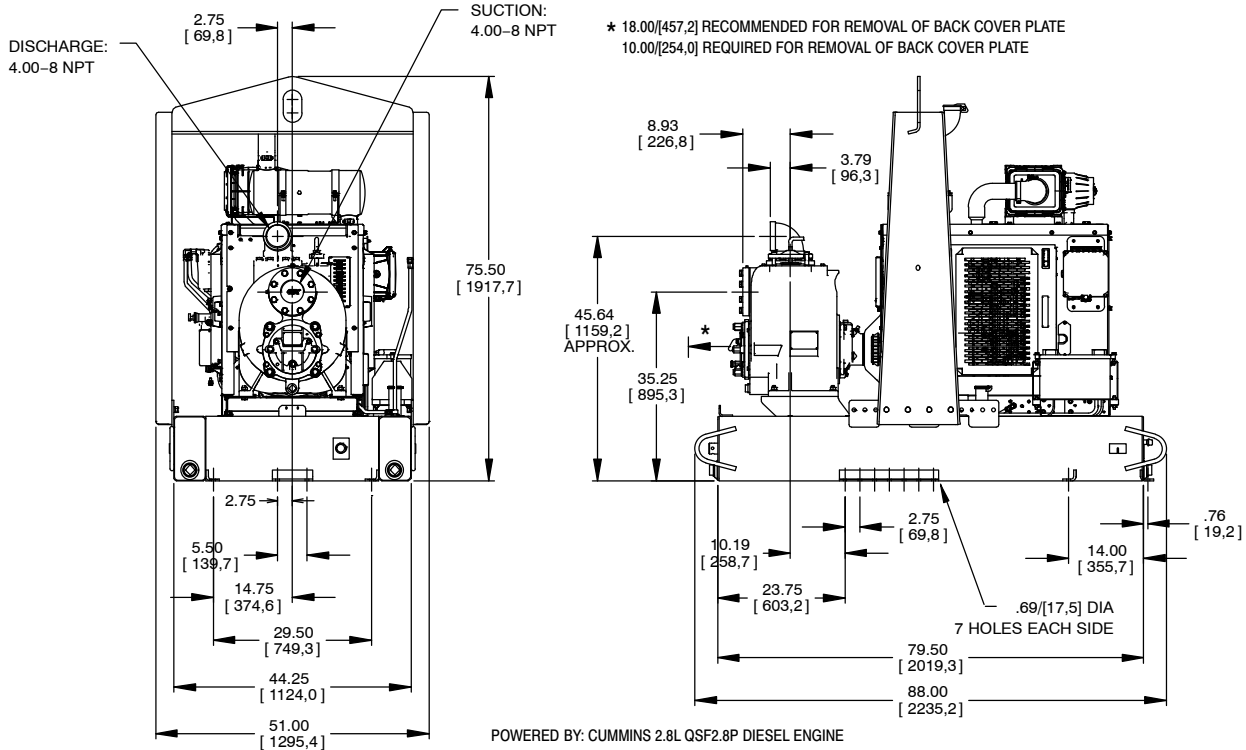
Printed in U.S.A.

Specification Data

SECTION 45, PAGE 1246

APPROXIMATE DIMENSIONS and WEIGHTS

NET WEIGHT:	SKID BASE 2776 LBS. (1259,2 KG.)	2-WHEEL 3136 LBS. (1422,5 KG.)
SHIPPING WEIGHT:	3104 LBS. (1408,0 KG.)	3136 LBS. (1422,5 KG.)
EXPORT CRATE SIZE:	252.7 CU. FT. (7,2 CU. M.)	



GORMAN-RUPP PUMPS

www.grpumps.com

Specifications Subject to Change Without Notice

Printed in U.S.A.