

# Sound Attenuated Environmental Silent Pump

**Super  
T SERIES**  
VARIOUS PATENTS APPLY

## Diesel Engine Driven Self Priming Centrifugal Pump Model T4A60S-4LE2T FT4-ESP Size 4" x 4"



Total Head		Capacity Of Pump In U.S. Gallons Per Minute (GPM) At Continuous Performance				
P.S.I.	Feet	300	300	300	300	300
54.6	126	300	300	300	300	300
43.4	100	373	495	622	680	680
34.7	80	380	505	632	720	792
26.0	60	388	512	642	725	805
17.3	40	395	520	650	730	815
8.7	20	405	530	660	740	825
<b>Suction Lift</b>		<b>25'</b>	<b>20'</b>	<b>15'</b>	<b>10'</b>	<b>5'</b>

### PUMP SPECIFICATIONS

**Size:** 4" x 4" (101 mm x 101 mm) NPT Male.

**Casing:** Gray Iron 30. Maximum Operating Pressure 82 psi (565 kPa).\*

**Semi-Open Type, Two Vane Impeller:** Ductile Iron 65-45-12.

Handles 3" (76.2 mm) Diameter Spherical Solids.

**Impeller Shaft:** Stainless Steel 17-4 PH.

**Replaceable Wear Plate:** Carbon Steel ASTM36.

**Removable Adjustable Cover Plate:** Gray Iron 30.

**Removable Inspection Cover Plate:** Gray Iron 30; 12 lbs. (5,4 kg.).

**Flap Valve:** Neoprene w/Steel Reinforcing.

**Seal Plate:** Gray Iron 30.

**Seal:** Cartridge Type, Mechanical, Oil-Lubricated, Double Floating, Self-Aligning. Silicon Carbide Rotating and Stationary Faces. Stainless Steel 316 Stationary Seat. Fluorocarbon Elastomers (DuPont Viton® or Equivalent). Stainless Steel 18-8 Cage and Spring. Maximum Temperature of Liquid Pumped 160°F (71°C).\*

**Bearing Housing:** Gray Iron 30.

**Radial Bearing:** Open Single Ball.

**Thrust Bearing:** Open Double Ball.

**Bearing and Seal Cavity Lubrication:** SAE 30 Non-Detergent Oil.

**Flanges:** Gray Iron 30.

**Gaskets:** Buna-N, Compressed Synthetic Fibers, PTFE, Vegetable Fiber, Cork, and Rubber.

**O-Rings:** Buna-N.

**Hardware:** Standard Plated Steel.

**Brass Pressure Relief Valve.**

**Bearing and Seal Cavity Oil Level Sight Gauges.**

\*Consult Factory for Applications Exceeding Maximum Pressure and/or Temperature Indicated.

**Standard Equipment:** Soundproof (EPA Average 72 dBA at 23 feet [7 meters] Under Load) Lightweight Aluminum Enclosure - Removable for Maintenance of Pump or Engine - w/Padlockable Door Panels. Spill Containment Base w/Integral Drains. Automatic Air Release Valve with Check Valve. 90° Discharge Elbow. **Full Feature Control Panel Single Ball Type Float Switch.**\*\*

**Optional Equipment:** Battery. Suction Vacuum and Discharge Pressure Gauge Kit. G-R Hard Iron Impeller, Seal Plate and Wear Plate. Single Axle Pneumatic-Tired Wheel Kit w/wo DOT-Approved Lights and Electric Brakes. **Tandem Axle Over-the-Road Trailer** (Meets DOT Requirements) Available w/Either Electric or Hydraulic Surge Brakes, Running Lights, Jack Stands and Safety Cables/Chains. Submersible Transducer Liquid Level Sensor.

\*\*50 Ft. (15 m) Standard Length; Dual Switches and Alternate Cable Lengths Available From the Factory.



SHOWN WITH OPTIONAL HIGHWAY TRAILER



### WARNING!

Do not use in explosive atmosphere or for pumping volatile flammable liquids.

### ENGINE SPECIFICATIONS

**Model:** Isuzu 4LE2T.

**EPA Tier:** Final Tier 4.

**Type:** Four Cylinder, Four Cycle, Turbocharged, Charge Air Cooled, Liquid Cooled Diesel Engine.

**Displacement:** 134 Cu. In. (2,2 Liters).

**Lubrication:** Forced Circulation.

**Air Cleaner:** Dry Type.

**Fuel Tank:** 70 U.S. Gals. (265 Liters).

**Full Load Operating Time:** 39.9 Hrs.

**Starter:** 12V Electric.

**Standard Features:** Muffler w/Weather Cap. DOC Exhaust After-Treatment System.

**Engine Control Features:** Padlockable Box with Throttle Control, Tachometer, Coolant Temperature, Oil Pressure, Voltage and Overstart Indicators/Shut-downs. Manual/Stop/Auto Keyswitch. Audible Startup Warning Delay. Electronic Fuel Level Sensor. Fuel Level Display/Alarm/Shutdown.

### ISUZU PUBLISHED PERFORMANCE:

Maximum Gross Continuous BHP  
48 (35.8 kW) @ 2400 RPM



## GORMAN-RUPP PUMPS

www.grpumps.com

Specifications Subject to Change Without Notice

Printed in U.S.A.

**Specification Data**

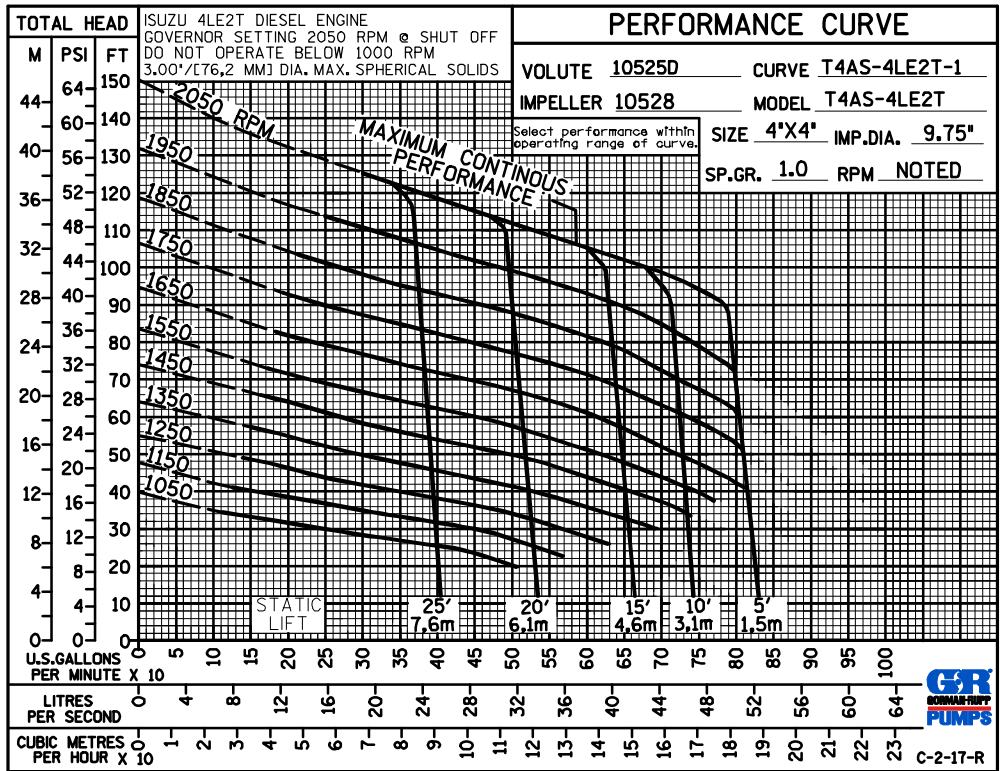
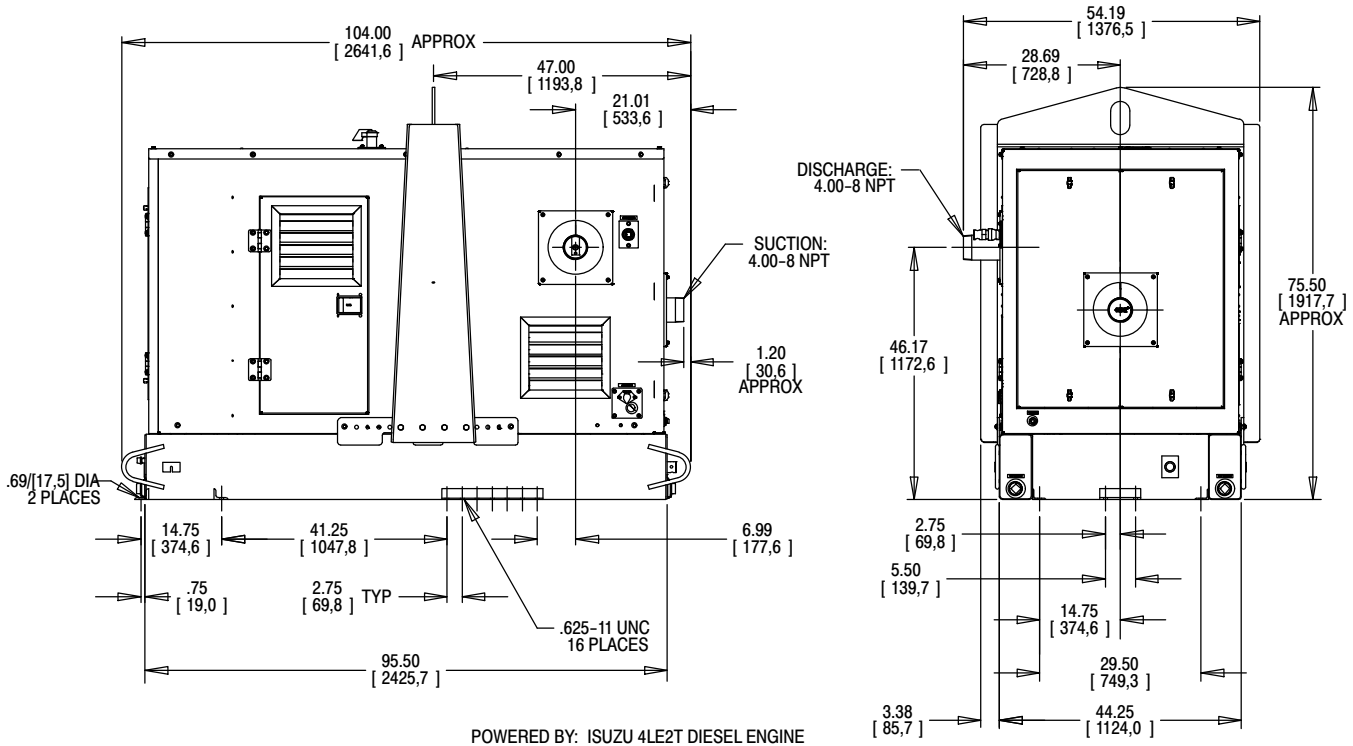
SECTION 45, PAGE 1248

APPROXIMATE  
DIMENSIONS and  
WEIGHTS

NET WEIGHT:  
SHIPPING WEIGHT:  
EXPORT CRATE SIZE:

**SKID BASE**

3190 LBS. (1447,0 KG.)  
3490 LBS. (1583,0 KG.)  
290.2 CU. FT. (8,2 CU. M.)



**GORMAN-RUPP PUMPS**

www.grpumps.com

Specifications Subject to Change Without Notice

Printed in U.S.A.