

Electric Motor Driven

Submersible Pump



Model SM2E1-X3.5



Size 2"

PUMP SPECIFICATIONS

MSHA PUMP APPROVAL NO. 2G-3971A-0.

COMMONWEALTH OF PENNSYLVANIA APPROVAL NO. BFE-637-77.

Suction Casing: Gray Iron 30;

Maximum Operating Pressure 47 psi (324 kPa).*

Impeller: Manganese Bronze Alloy 8A.**Seal Plate:** Gray Iron 30.**Intermediate:** Aluminum Alloy 356-T6.**Motor Housing:** Aluminum Alloy 356-T6.**Motor Shaft:** Stainless Steel Type 17-4 PH.**Bearings:** Upper and Lower, Two Synthetic Seals, Single Row Ball Bearing.**Discharge Flange:** Aluminum Alloy 356-T6.**Gaskets:** Cork with Nitrile Binder (NC710).**O-Rings:** Buna-N.**Wetted Hardware:** Standard Plated Steel and Stainless Steel.**Strainer:** Urethane Coated Steel; 47% Open Area,

0.31" (7.9 mm) Diameter Openings.

Hoisting Bail: Urethane Coated Steel.**Standard Equipment****NEMA Type 10 Explosion Proof Control Box:**

Provides On-Off, Circuit Breaker and Motor Overload Protection.

MSHA Certification No. X/P-3026-1.**Optional Equipment**

Staging Adapter Kit.

MSHA-Certified Automatic Control Box, [Single Ball Type Float Switch](#).**

**Cable Lengths From 50 to 400 Feet Available.

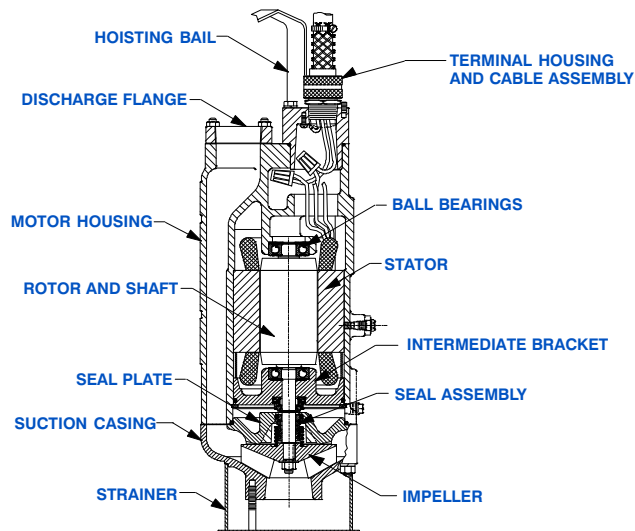
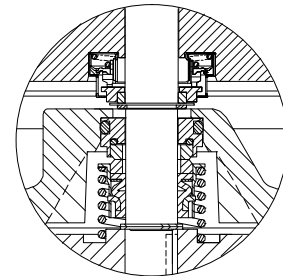
MOTOR/CABLE SPECIFICATIONS**Motor:** Air Filled Enclosure.3.5 H.P.; 3450 R.P.M.; 60 Hz.

Three Phase, 460/575 Volt, 4.5/3.6 Full Load AMPS, 3.2 kW (Max.)

MSHA Certification No. X/P-3142-0.**Power Cable:** 7 Wire, Type SPC; (3) 12 AWG Power Conductors, (2) 14 AWG Control Conductors, (1) 10 AWG Ground Conductor and (1) 14 AWG Ground Check Conductor. Nominal Length 50 Feet (15 m) Standard.

(Specify Alternate Length at Time of Order.)***

*** Circuit Breaker Amp Rating and Maximum Combined Length of Motor and Trailing Cables May Apply (Consult Factory for Details).

**SEAL SPECIFICATIONS**

Tandem, Oil Lubricated.

Upper: Type 22, Mechanical. Cast Iron Rotating Face, and Carbon Stationary Face. Buna-N Elastomers. Carbon Steel Spring and Plated Steel Cage.**Lower:** Type 2 Mechanical. Tungsten Carbide Rotating and Stationary Faces. Fluorocarbon Elastomers (DuPont Viton® or Equivalent). Stainless Steel 316 Cage, Spring and Stationary Seat.

Maximum Temperature of Liquid Pumped 122°F (50°C).*

* Consult Factory for Applications Exceeding Maximum Pressure and/or Temperature Indicated.



GORMAN-RUPP PUMPS

www.grpumps.com

Specifications Subject to Change Without Notice

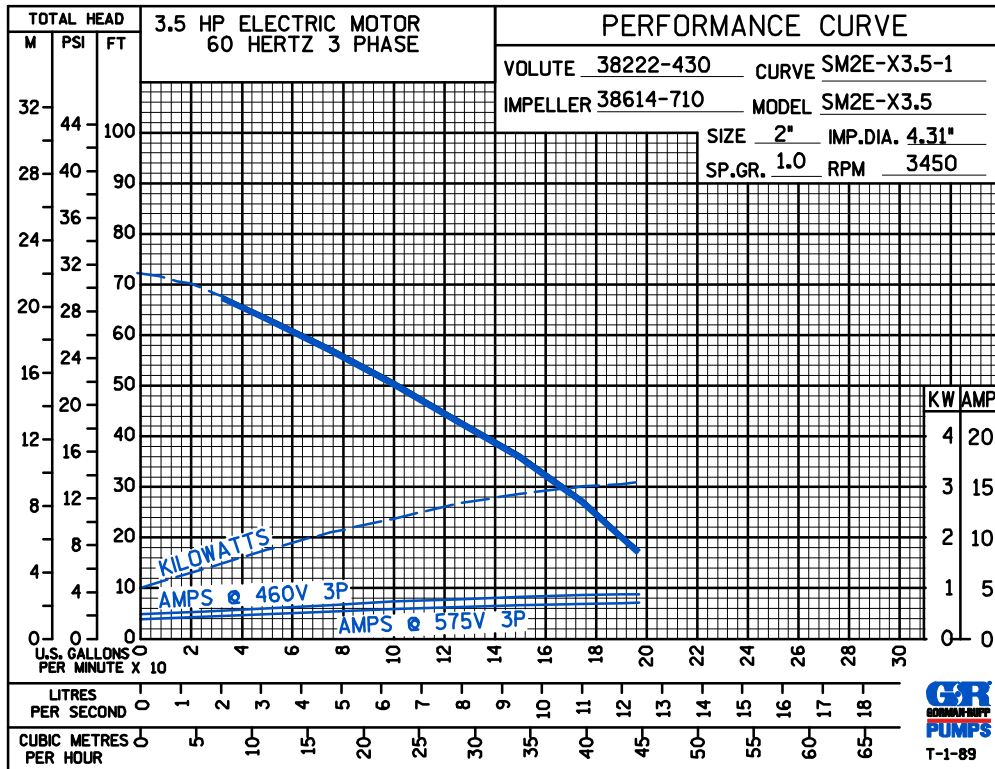
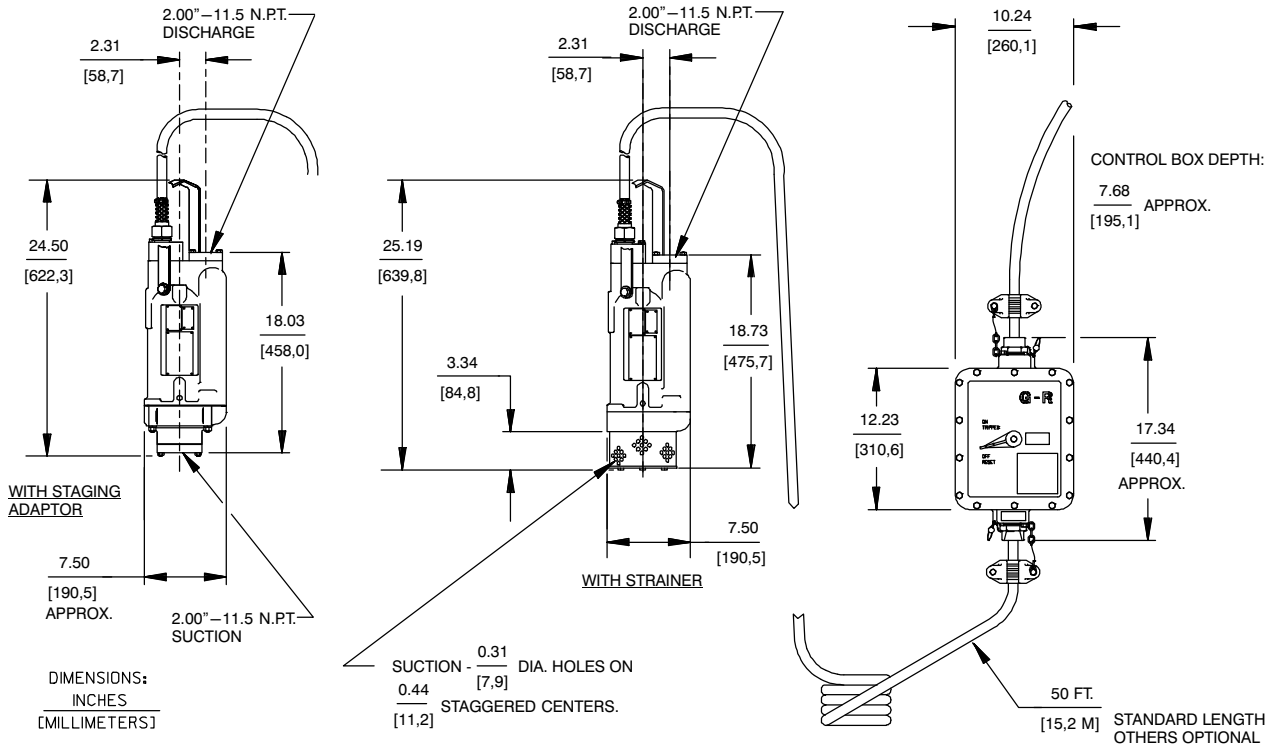
Printed in U.S.A.

Specification Data

SECTION 132, PAGE 150

APPROXIMATE DIMENSIONS and WEIGHTS

PUMP & CABLE NET WEIGHT: 79 LBS.(35,8 KG.)
CONTROL BOX NET WEIGHTS: 35 LBS.(15,9 KG.)
GROSS SHIPPING WEIGHT: 123 LBS.(56,2 KG.)
EXPORT CRATE: 8.2 CU. FT.(0,23 CU. M.)



GORMAN-RUPP PUMPS

www.grpumps.com

Specifications Subject to Change Without Notice

Printed in U.S.A.