

Self Priming Centrifugal Pump



Model 81 1/2P47A-B

Size 1 1/2" x 1 1/2"



PUMP SPECIFICATIONS

Size: 1 1/2" x 1 1/2" (38 mm x 38 mm) NPT - Female.

Casing: Polypropylene.

Maximum Operating Pressure 44 psi (303 kPa).*

Semi-Open Type, Four Vane Impeller: Polypropylene.

Handles 9/16" (14,2 mm) Diameter Spherical Solids.

Impeller Shaft: Alloy Steel A-29-12L14.

Replaceable Vane Plate: Polypropylene.

Replaceable Flow Guide: Polypropylene.

Bearing Housing: Alloy Steel A-29-12L14.

Intermediate: Polypropylene.

Radial and Thrust Bearings: Single Row Ball.

Bearing Lubrication: Self Lubricated.

Mounting Bracket: Alloy Steel Plate 1008-1020.

O-Rings: Buna-N.

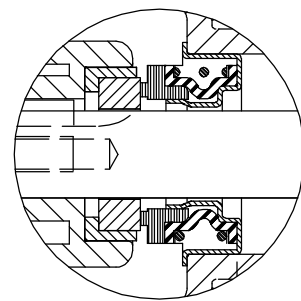
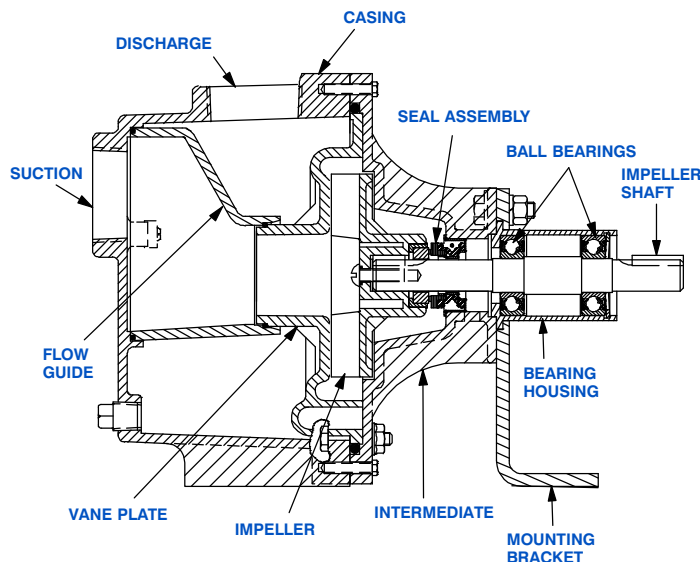
Hardware: Stainless Steel 18-8.

Strainer.

Optional Equipment:

Consult Factory for Additional Options.

**Consult Factory for Applications Exceeding
Maximum Pressure and/or Temperature Indicated.*



SEAL DETAIL

Type 6A, Mechanical, Self-Lubricated. Ceramic Rotating Face. Carbon Stationary Face. Fluorocarbon Elastomers (DuPont Viton® or Equivalent). Stainless Steel 18-8 Cage and Spring. Maximum Temperature of Liquid Pumped 160°F (71°C)*



GORMAN-RUPP PUMPS

www.grpumps.com

Specifications Subject to Change Without Notice

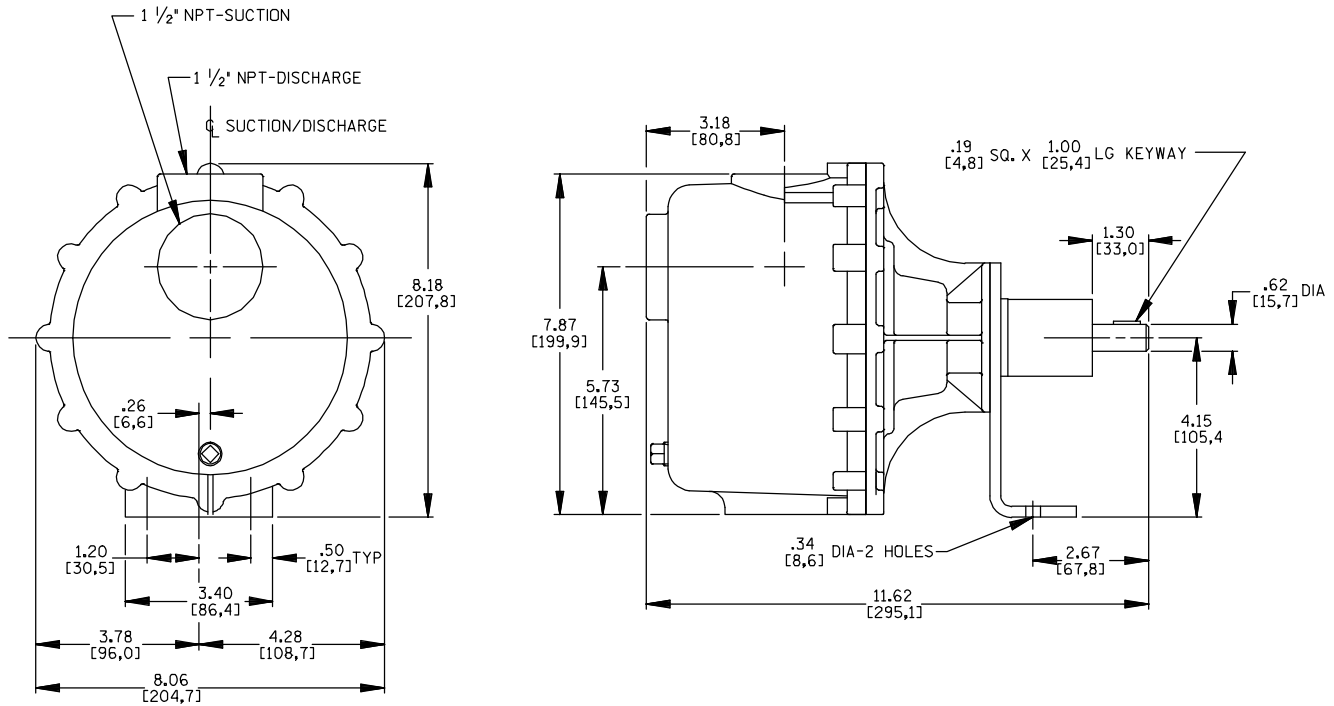
Printed in U.S.A.

Specification Data

SECTION 50, PAGE 720

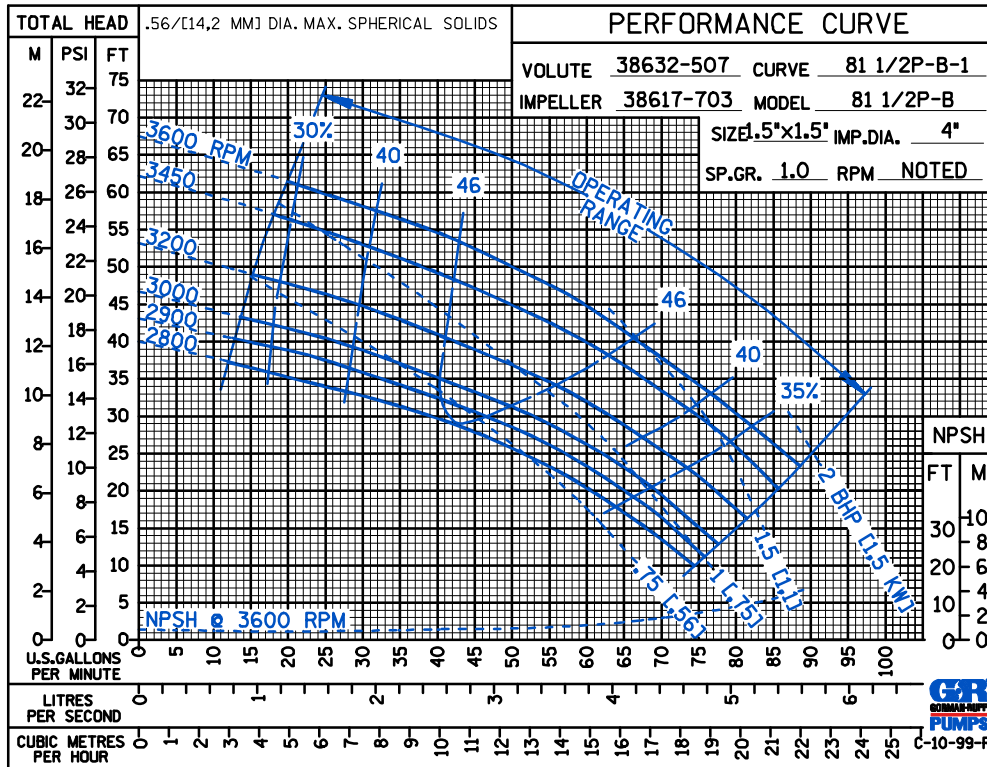
APPROXIMATE
DIMENSIONS and WEIGHTS

NET WEIGHT: 8 LBS. (3,6 KG.)
SHIPPING WEIGHT: 9 LBS.(4,1 KG.)
EXPORT CRATE: 0.8 CU. FT. (0,02 CU. M.)



DIMENSIONS:
INCHES
[MILLIMETERS]

60 HERTZ
Performance
Based on
Water



GORMAN-RUPP PUMPS

www.grpumps.com

Specifications Subject to Change Without Notice

Printed in U.S.A.