

SPECIFICATION DATA



Vertically Staged
Basic Pump with UltraMate® Second Stage



Model: VS6A60-B

Various Patents Apply

Pump Specifications

Size	8" x 6" (203 mm x 154 mm) - Flanged **
Impeller Type	Semi-Open, Two Vane
Solids-Handling Capability	3" (76,2 mm) Dia. Spherical Diameter
Seal Type	Cartridge Type, Mechanical, Oil-Lubricated, Double Floating, Self-Aligning
Radial Bearing	Open Double Row Ball
Thrust Bearing	Open Double Row Ball
Bearing and Seal Cavity Lubrication	SAE 30 Non-Detergent Oil
Maximum Operating Pressure	250 psi (1723 kPa)*
Max Temp of Liquid Pumped	160°F (71°C).*
Oil Level Sight Gauges	Bearing and Seal

Pump Materials

Upper Casing	Ductile Iron 65-45-12
Lower Casing	Gray Iron 30
Impellers	Ductile Iron 65-45-12
Impeller Shafts	Alloy Steel 4150
Shaft Sleeves	Alloy Steel 4130
Seal: Stationary Face	Silicon Carbide
Rotating Face	Silicon Carbide
Elastomer	Fluorocarbon FKM, (Viton® or Equivalent)
Replaceable Wear Plates:	Carbon Steel ASTM A36
Removable Adjustable Cover Plates	Gray Iron 30
Removable Inspection Cover Plate	Gray Iron 30 – 13 lbs. (5,9 kg.)
Seal Plates	Gray Iron 30
Bearing Housings	Gray Iron 30
Suction Flange	Gray Iron 30
Transition Chamber	Ductile Iron 65-45-12
Gaskets	Buna-N, Compressed Synthetic Fibers, Vegetable Fiber, PTFE, Cork and Rubber
O-Rings	Buna-N
Hardware	Standard Plated Steel
Pressure Relief Valves	Brass

*Consult Factory for Applications Exceeding Maximum Pressure and/or Temperature Indicated.

Optional Equipment: Automatic Air Release Valve. High Pump Temperature Shutdown Kit. Stainless Steel/G-R Hard Iron Impeller, Seal Plate and Wear Plate. 120/240 Volt Casing Heater.

** Optional Gray Iron 30 Flange Kits Available as Follows (See Price Sheets):

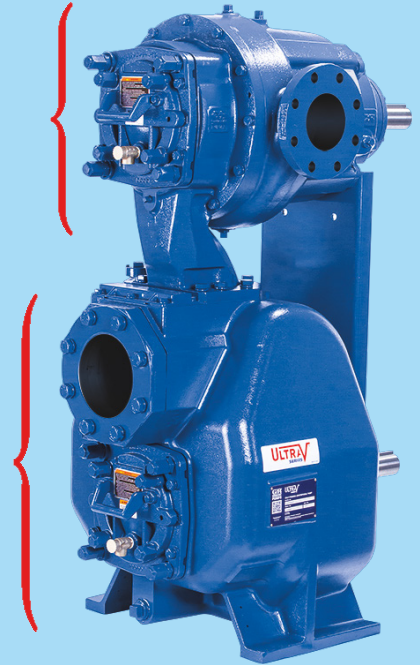
8" and 6" Female NPT Suction/Discharge Flange Kits.

8" and 6" ASA Suction/Discharge Spool Flange Kits.

200mm and 150mm DIN 2527 (PN 16) Suction/Discharge Spool flange Kits.

UltraMate®
Second
Stage

Ultra V
Basic
Pump



VERTICALLY STAGED ULTRA V WITH ULTRAMATE FEATURES AND BENEFITS

Easy To Service And Maintain - Pump is mounted above liquid being pumped with only the suction line down in liquid.

Dual Bearing Protection - An atmospheric barrier along with two lip seals provide additional protection of the pumps bearings. This unique design also allows for quick and easy external monitoring of the bearing cavity.

Inspection Covers - Patented, lightweight inspection cover for easy access to the impeller without removing the entire backcover plate or piping.

5 Year Ultra V Series Warranty

Up To 3" Diameter Spherical Solids Handling (2.50" dia. solids on VS3A model).

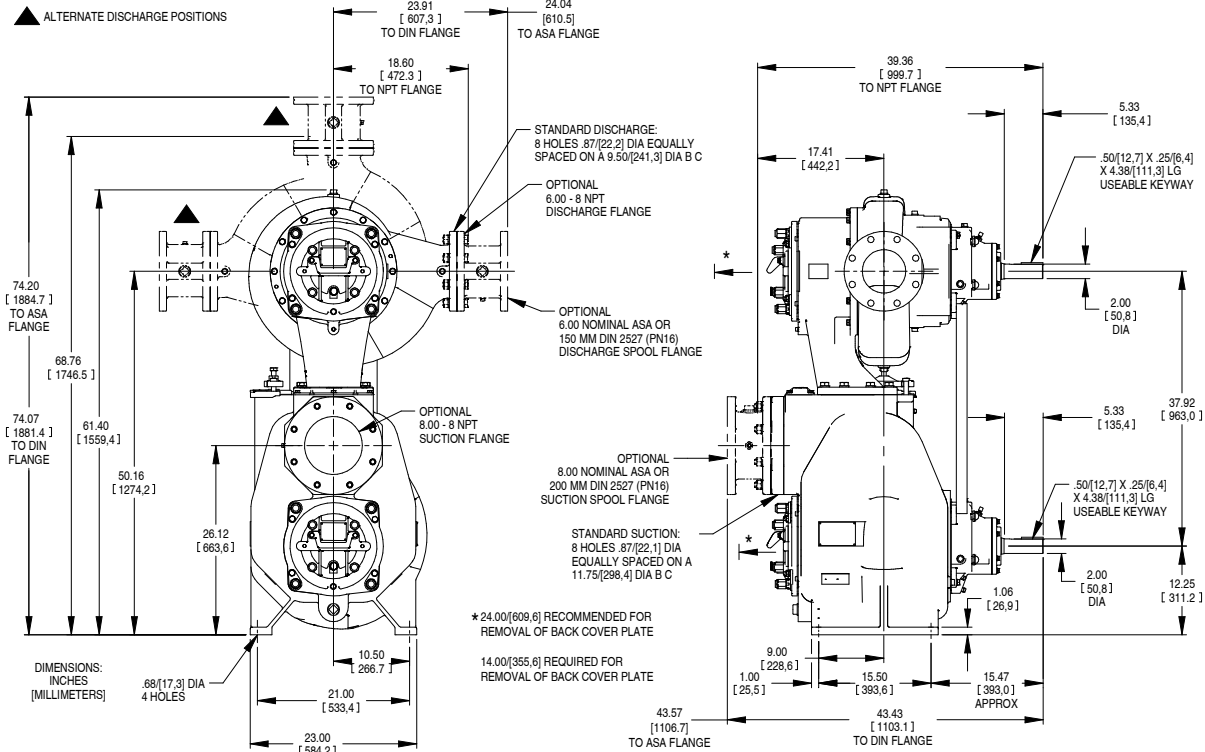
Removable Rotating Assemblies - The entire rotating assembly can be removed without disturbing the pumps volute or piping allowing the rotating assemblies to be easily repaired or quickly replaced with a new ready to drop in assembly.

Two Stages- UltraMate® paired directly to the Ultra V , maximum pressure is increased up to three times the pressure of traditional solids-handling, self-priming, single stage pumps.

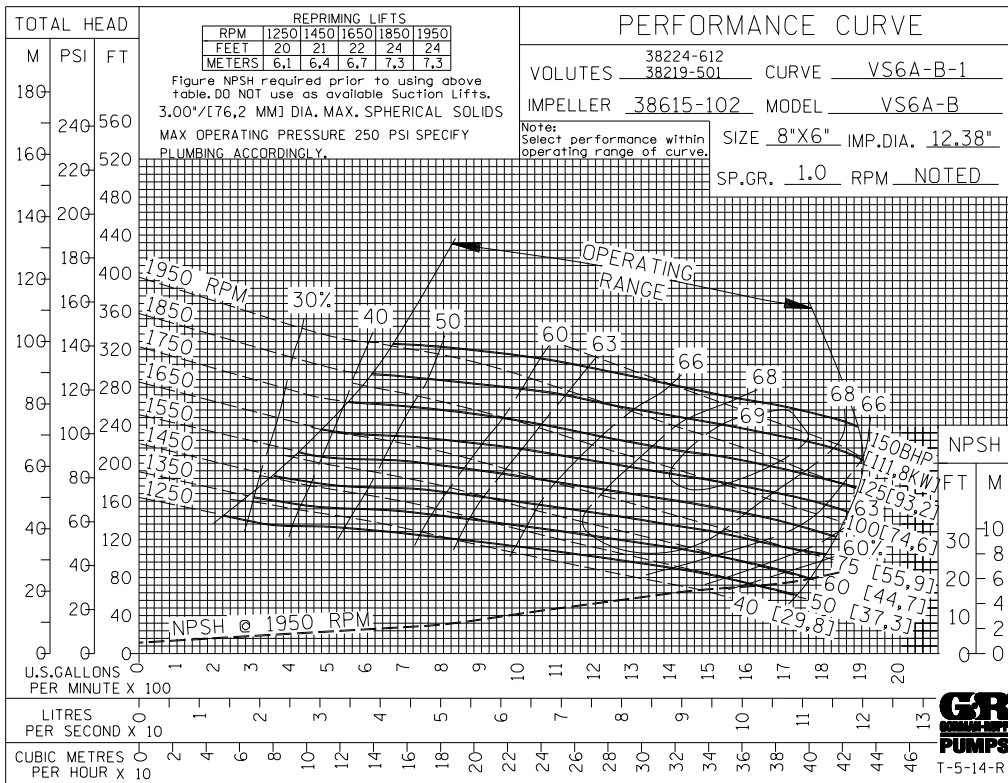
APPROXIMATE DIMENSIONS AND WEIGHTS

NET WEIGHT	1900 LBS. (862 KG.)*
SHIPPING WEIGHT	2100 LBS. (953 KG.)*
EXPORT CRATE	126 CU. FT. (3,6 CU. M.)

*WEIGHTS DO NOT INCLUDE OPTIONAL FLANGE KITS.



OPTIONAL SUCTION & DISCHARGE FLANGES SHOWN IN PHANTOM



**MULTI-SPEED
 CURVE
 PERFORMANCE
 BASED ON
 WATER**

**TOTAL
 COMBINED
 H.P. SHOWN**



**MULTI-SPEED
CURVE
PERFORMANCE
BASED ON
WATER**

**TOTAL
COMBINED
H.P. SHOWN**

