



# Self Priming Centrifugal Pump

## Model 04E1-GHH

### Size 4" x 4"

#### PUMP SPECIFICATIONS

**Size:** 4" x 4" (102 mm x 102 mm) Victaulic.®

**Casing:** Aluminum 356-T6.

Maximum Operating Pressure 325 psi (2241 kPa).\*

**Enclosed Type, Six Vane Impeller:** Aluminum 356-T6.

Handles 11/16" (17,4 mm) Diameter Spherical Solids.

**Impeller Shaft:** Alloy Steel 8620.

**Two Replaceable Wear Rings:** Gray Iron 30.

**Suction Head:** Aluminum 356-T6.

**Gearbox Housing:** Gray Iron 30.

**Gearbox Lubrication:** SAE 90 Gear Oil.

**Gears:** Alloy Steel 8620 and Carbon Steel 12L14.

**Gear Ratio:** 2.56:1 Increase.

**Bearings:** Open Single Row Ball, Roller and Tapered Roller.

**Gaskets:** Buna-N, Resistant Synthetic Rubber and Cork.

**Hardware:** Standard Plated Steel.

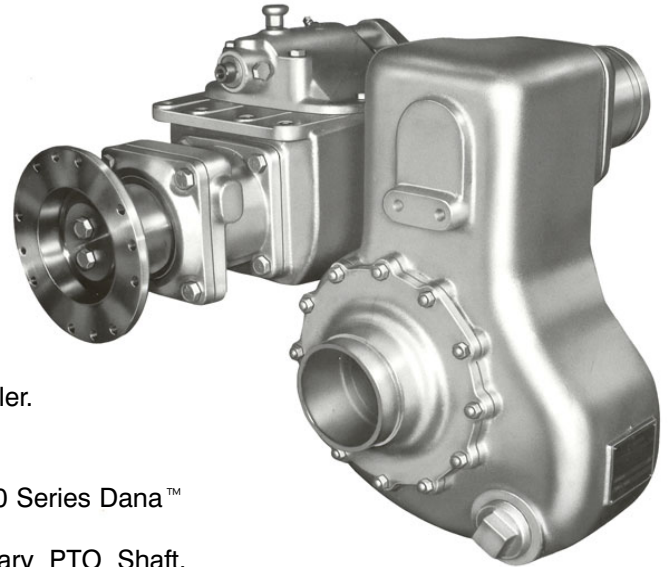
**Standard Equipment:** Trunnion Assembly. Air Shift. 1800 Series Dana™ Flanges.

**Optional Equipment:** Mounting Cross Member, Auxiliary PTO Shaft. Speedometer Adaptor.

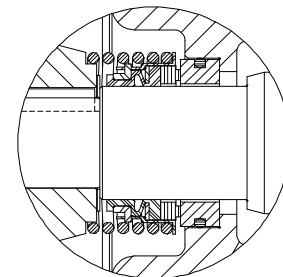
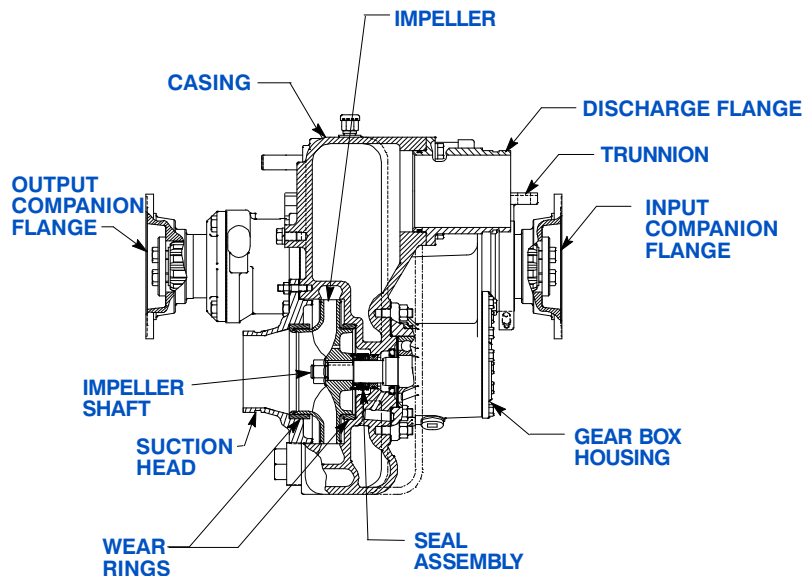
Victaulic is a Registered Trademark of Victaulic Company of America.

Dana is a Registered Trademark of Dana Corporation.

*\*Consult Factory for Applications Exceeding Maximum Pressure and/or Temperature Indicated.*



Rotation:  
Clockwise Facing Gearbox Input Shaft.



#### SEAL DETAIL

Type 2, Mechanical, Self-Lubricated. Carbon Rotating Face. Ni-Resist Stationary Face. Fluorocarbon Elastomers (DuPont Viton® or Equivalent). Stainless Steel 18-8 Cage and Spring. Maximum Temperature of Liquid Pumped, 160°F (71°C).\*



THE GORMAN-RUPP COMPANY • MANSFIELD, OHIO

GORMAN-RUPP OF CANADA LIMITED • ST. THOMAS, ONTARIO, CANADA

www.grpumps.com

Specifications Subject to Change Without Notice

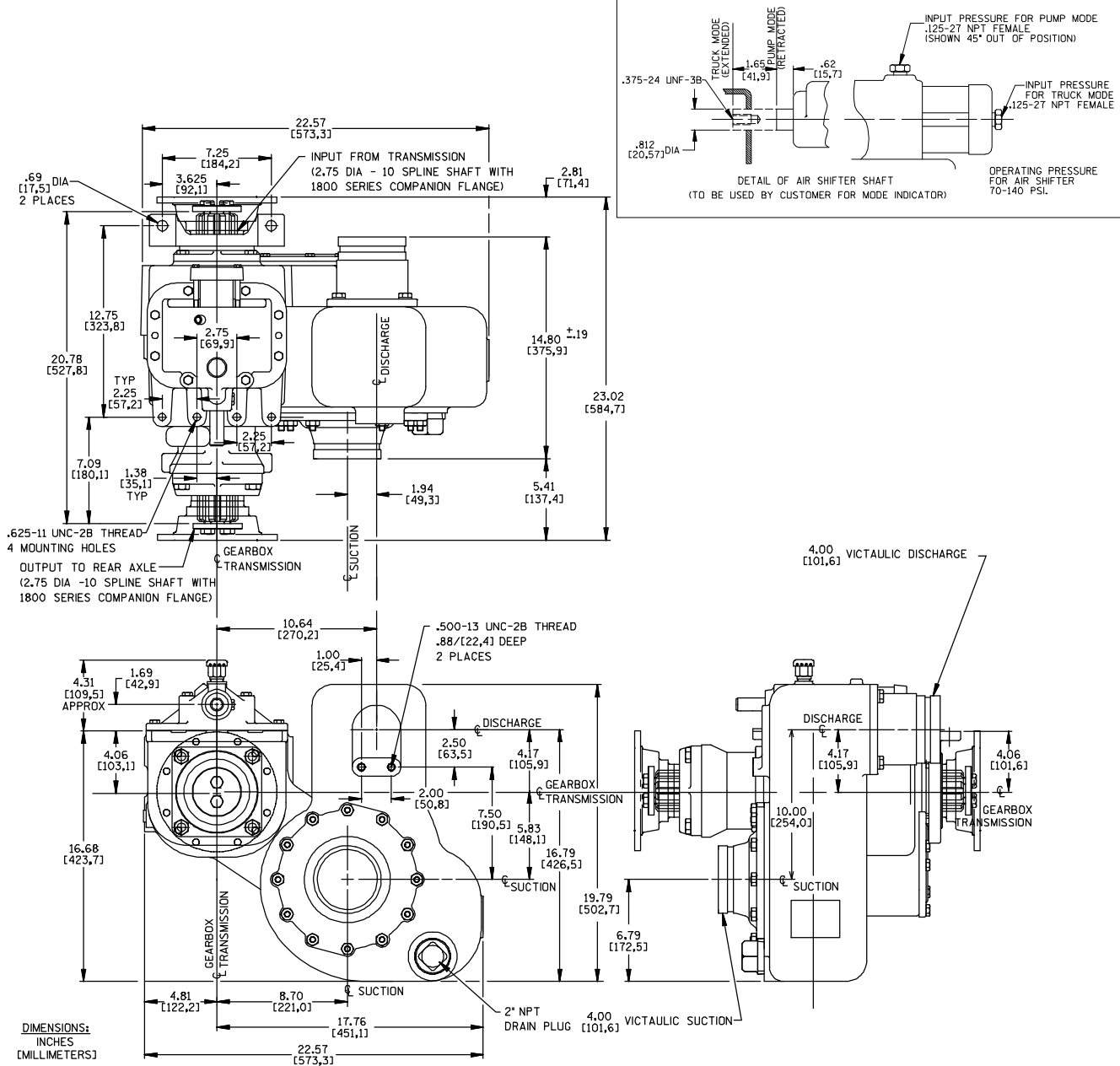
Printed in U.S.A.

**Specification Data**

APPROXIMATE  
DIMENSIONS and WEIGHTS

**NET WEIGHT:** 243 LBS. (110 KG.)  
**SHIPPING WEIGHT:** 300 LBS. (136 KG.)  
**EXPORT CRATE SIZE:** 8.9 CU. FT. (0,25 CU. M.)

**SECTION 110, PAGE 610**



GEARBOX THROUGH TORQUE CAPACITY BASED ON SHAFT & SPLINE SIZE		
DIESEL	TRANSMISSION	GASOLINE
AUTO		AUTO
11,000	FT. LBS. MAXIMUM	12,300
1 521	KGM MAXIMUM	1 701

TO PREVENT RAKING OF GEARS WITH AUTOMATIC TRANSMISSIONS, INSTALL BRAKE TO LIMIT INPUT SHAFT ROTATION TO NO MORE THAN 15 RPM MAXIMUM DURING SHIFTING.

FOR AIR SHIFT, 70 - 140 PSI (482 - 965 kPa) AIR PRESSURE REQUIRED AT GEARBOX AIR CYLINDER, 1/4" (6,4 mm) LINES RECOMMENDED.

Victaulic is a Registered Trademark of Victaulic Company of America.



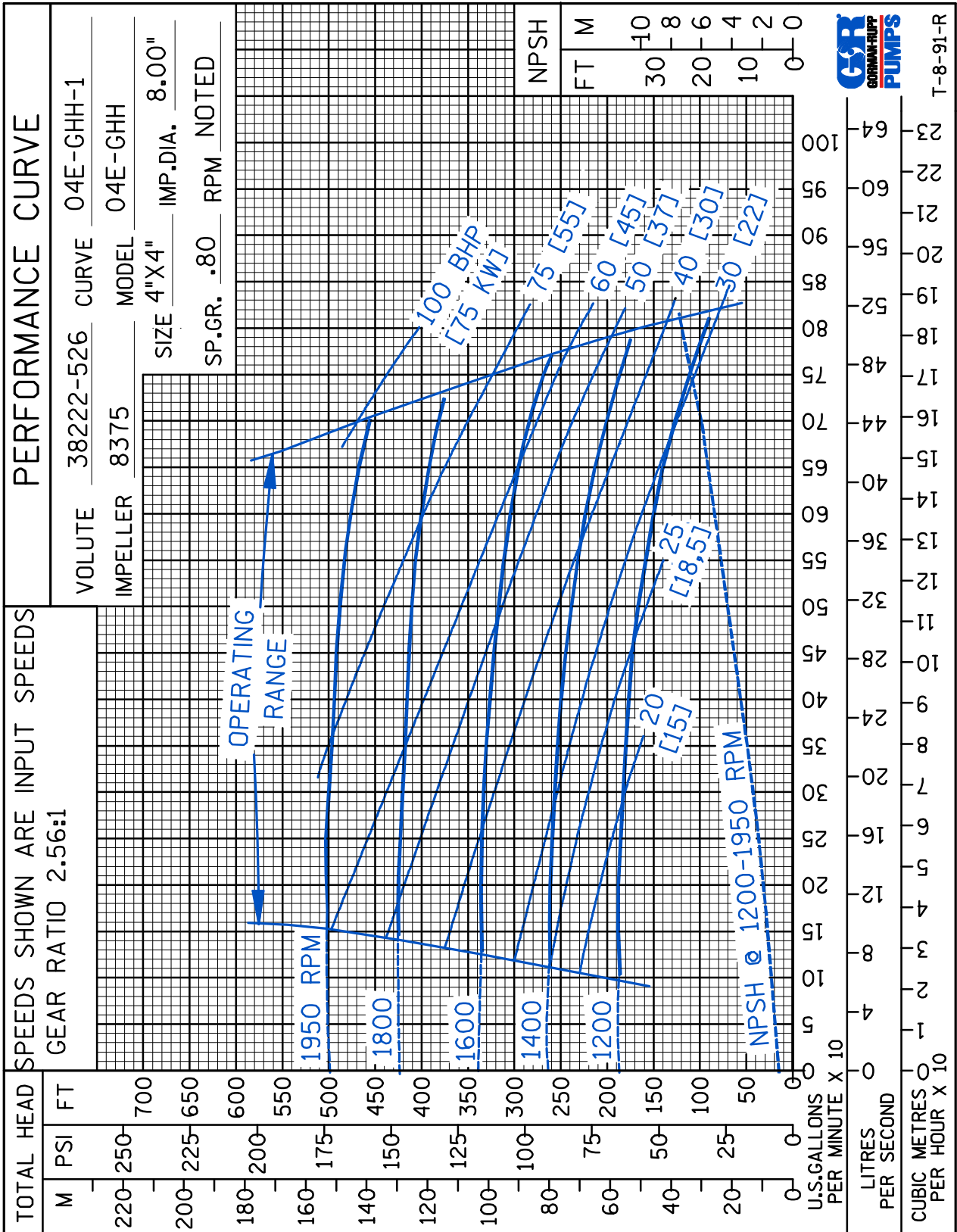
**THE GORMAN-RUPP COMPANY • MANSFIELD, OHIO**

GORMAN-RUPP OF CANADA LIMITED • ST. THOMAS, ONTARIO, CANADA

Specifications Subject to Change Without Notice

Printed in U.S.A.

**PERFORMANCE BASED ON PETROLEUM**



THE GORMAN-RUPP COMPANY • MANSFIELD, OHIO

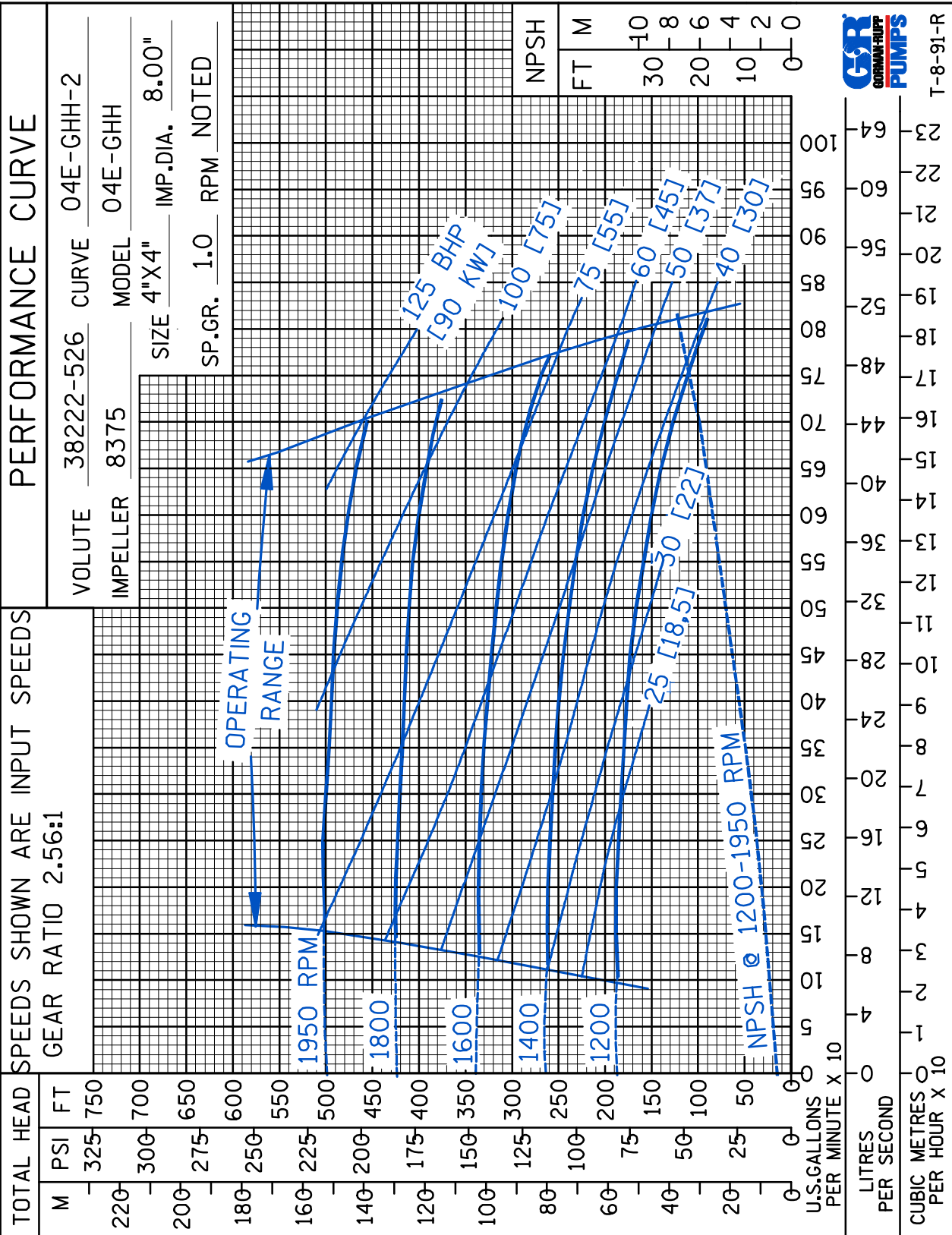
GORMAN-RUPP OF CANADA LIMITED • ST. THOMAS, ONTARIO, CANADA

www.grpumps.com

Specifications Subject to Change Without Notice

Printed in U.S.A.

PERFORMANCE BASED ON WATER



THE GORMAN-RUPP COMPANY • MANSFIELD, OHIO

GORMAN-RUPP OF CANADA LIMITED • ST. THOMAS, ONTARIO, CANADA

www.grpumps.com

Specifications Subject to Change Without Notice

Printed in U.S.A.